

## ROBOTIC NON DESTRUCTIVE TESTING OF SAFETY CRITICAL STRUCTURES

**Sattar, T.P.<sup>1</sup>, Leon Rodriguez, H.E.<sup>2</sup>, Salman, H.<sup>1</sup>**

<sup>1</sup> London South Bank University, Faculty of Engineering, Science & the Built Environment, London, UK

e-mail: [sattartp@lsbu.ac.uk](mailto:sattartp@lsbu.ac.uk)

<sup>2</sup> Nueva Granada Military University, Bogota, Colombia

### ABSTRACT

*Reliable Non Destructive Testing (NDT) is vital to the integrity and performance management of capital assets in safety critical industries such as aerospace, transportation, pipelines, petro-chemical processing, and power generation. The structures that are to be inspected are usually very large and located in remote and hazardous environments. The NDT system has to be deployed by first providing very expensive access, requiring the erection of scaffolding and lengthy preparation before NDT can start. In addition the system is required to find and characterize component and structural defects to a high probability of detection thereby decreasing the probability of failure. Another priority is to reduce outage time as the cost of loss of production runs into millions.*

*This paper describes recent developments in mobile wall climbing, swimming and pipe crawling robots that provide the means to perform NDT on difficult to access structures and in some cases provide the possibility of carrying out the NDT in-service thus preventing costly outages. In confined and hazardous environments they are the only means to reach a test site and perform the NDT.*

**Keywords:** Non Destructive Testing, Wall Climbing, Pipe Climbing and Amphibious Robots.

### 1 INTRODUCTION

Insurance bodies such as Lloyds require detailed inspection reports of new safety critical infrastructure whose collapse can lead to loss of life, large economic loss and environmental contamination. The inspection has to be performed both during and after construction of large fixed welded structures such as box girder bridges, storage tanks, ships and other steel fabrications which arise on construction sites, in large chemical and foodstuff plants, on offshore oil platforms etc.

These structures are usually very large and/or located in remote and hazardous environments. The Non Destructive Testing (NDT) system has to be deployed by first providing very expensive access, requiring the erection of scaffolding and lengthy preparation before NDT can start.

In many cases e.g. in power plant, pipelines, storage tanks in the petro-chemical and food processing industries, etc., the inspection has to be performed during an outage by shutting down a plant. There is an enormous pressure to reduce the outage time by performing the inspections as efficiently and quickly as possible to provide a quick turnaround.

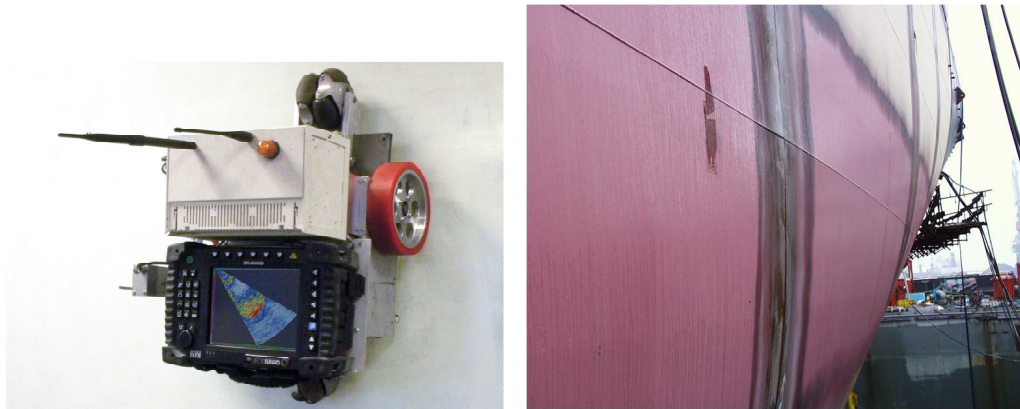
Our research has developed a number of mobile wall-climbing, swimming and pipe-climbing robots that greatly reduce the cost of access to a test site by eliminating

scaffolding or abseiling and rope deployment of human operators [<sup>1,2,3</sup>]. This paper describes some of these robots.

## 2 WELD INSPECTION OF SHIP HULLS AND STRENGTHENERS

The European funded project “Climbing Robot Cell for Fast and Flexible Manufacture of Large Scale Structures (CROCELLS)” has developed a team of prototype robots that cooperatively perform cleaning, welding and ultrasound NDT of large vertical steel structures [<sup>4</sup>]

The NDT inspection robot, size: 600mm x 375mm x 340mm is shown in figure 1. It has been designed to perform long weld line inspection of new ship hulls and also repaired steel structures (external and internal) of the type shown in figure 2 [<sup>5,6</sup>].



*Figure 1: CROCELLS robot on the left. Weld lines on new hull construction*



*Figure 2: Weld inspection of ship hulls and stiffeners after repair*

The robot achieves smooth and continuous movement, as well as excellent manoeuvrability, with a differential drive wheeled robot that uses permanent magnet adhesion. The magnets work over large air gaps of 20mm for the purpose of working on curved surfaces and overcoming small obstacles such as studs and bolts. The payload of the NDT robot is approximately 10kg. The robot has two sections connected by a hinge joint, with two wheels to drive the robot, and two omni-wheels, one in the front and one

in the back, to support the robot. The two-section design enables motion through sharp angled corners presented in ship hulls with the back half maintaining strong holding force when the front half of magnet is lifted up. After the front magnets resume strong holding force, then the back magnet is lifted up to complete the transfer.

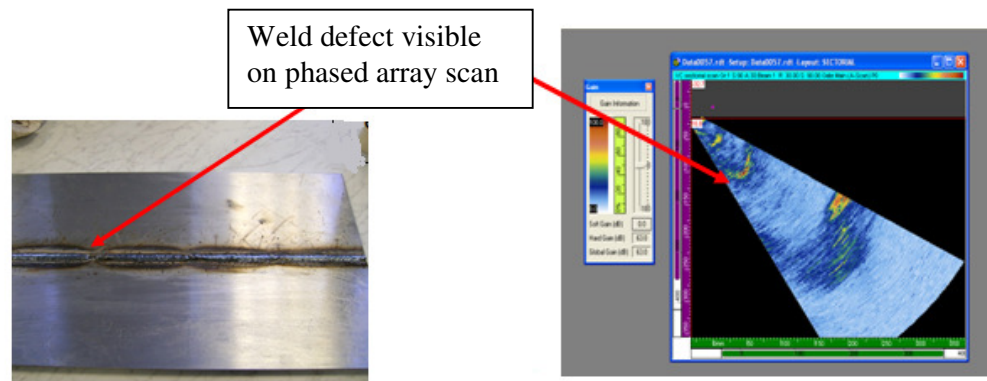
The on-board robot controllers are controlled via an Ethernet network. An interface conversion module converts Ethernet to serial, IO, AD and I2C interfaces, allows the connection of different sensors and equipment and enables their monitoring or control via standard TCP-IP protocol.

All the on-board modules are plugged to an Ethernet hub which is carried on the robot. The uplink of the hub is connected to a wireless bridge for Wi-Fi wireless communication with a central task manager. Two infrared distance sensors facing side ways, guide the robot along stiffeners such as those which arise on container ships,.

The NDT robot is able to follow the welding robot by using the infrared distance measuring sensors and by sensing the hot welding point with a thermal array sensor of eight thermopiles arranged in a row. It can measure the temperature of 8 adjacent points simultaneously. The sensor reads infra-red in the 2um to 22um range, which is the radiant heat wavelength.

The driving wheels are made of aluminium hubs bonded with solid 65 IRHD polyurethane tyres with coefficient of friction of 0.9 on steel walls. The key benefits of the material are resistance to abrasion (non-marking), impact, cuts, and large range of operating temperatures. The polyurethane material has a long working life, good traction and is oxygen and ozone resistant.

The NDT robot is required to perform real time inspection of long weld lines with 100% volume coverage, simultaneously with the welding process. Ultrasound phased array NDT with an Omniscan carried by the robot sends data wirelessly to a laptop for analysis. A scan from a weld test piece is shown in figure 3.



*Figure 3: Phased array ultrasound NDT of welds*

### 3 INSPECTION OF STORAGE TANK FLOORS

Storage tanks are normally inspected by opening them after every ten years. Tank outages are very expensive as the tank product has to be emptied by transporting and storing it at other locations. The tank has to be repeatedly cleaned so that it is free of toxic and explosive vapour before the tank is opened for inspection by human operators. A crude oil tank outage can take 8-9 months. Initial NDT is by MFL and more detailed inspection is by ultrasound.

Huge savings in cost and inspection times could be obtained by performing in-service inspection of tank floors and walls with robotic devices. Our work has resulted in the development of prototype mobile robots [7] that can enter tanks through minimum manhole openings of 300 mm diameter to deploy a payload of Non Destructive Testing (NDT) sensors for the inspection of top and bottom corrosion on the tank floor. The robots are designed to operate in explosive and hazardous liquids such as crude oil, petroleum products, etc.

To inspect the floor of clean storage tanks (size from about 2 to 20 metres in diameter) containing blended oil products and chemicals, for underside corrosion, magnetic flux leakage (MFL) is used for the initial inspection. Suspect areas are further examined using either vacuum box or magnetic particle inspection methods.

To inspect larger crude oil storage tanks (20 and 100 metres diameter with construction from carbon steel and floating roofs), either double skin or pontoon type, with many manhole openings (for agitator entry). The preparation periods for entry and internal inspection are lengthy with 6-9 months required for removal of the oil, gas, and sludge banks. Another 3-6 months are required for the process of washing the tank clean of all oil and venting it before men can enter the tank. Tanks are inspected visually followed by MFL techniques to find problem areas. Ultrasound testing is used as a final method to validate the problem areas. Dependent on technique, annular floor plate thickness up to 35mm can be achieved with discrimination between topside and under floor corrosion. A number of robots that gain entry to tanks to perform cleaning and inspection tasks have been developed [8, 9, 10].



*Figure 4: A tank Farm and the ROBTANK robot on a storage tank roof next to entry hole*

Our prototype wall climbing robot called ROBTANK can perform ultrasonic non-destructive testing (NDT) while submerged in liquids. The robot is able to rotate through any angle within the full 360 degree maximum and can change surfaces from a floor to a wall and vice versa. It is designed to find application in the in-service inspection of large storage tanks to detect corrosion on tank floors and walls, and in the inspection of floating oil storage platforms that have first been emptied and then filled with water. It can also be applied without modification to inspect the submerged hull of a ship. ROBTANK is designed to be compact and lightweight so that it can be manually handled by one or at most two operators and can be inserted into restricted spaces through manholes of diameter 300 mm or more. It is equipped with an array of four ultrasonic wheel probes, four compression probes and two bulk-wave rotating probes look for corrosion thinning on the floor and walls up to half a metre ahead and under inaccessible floor areas.



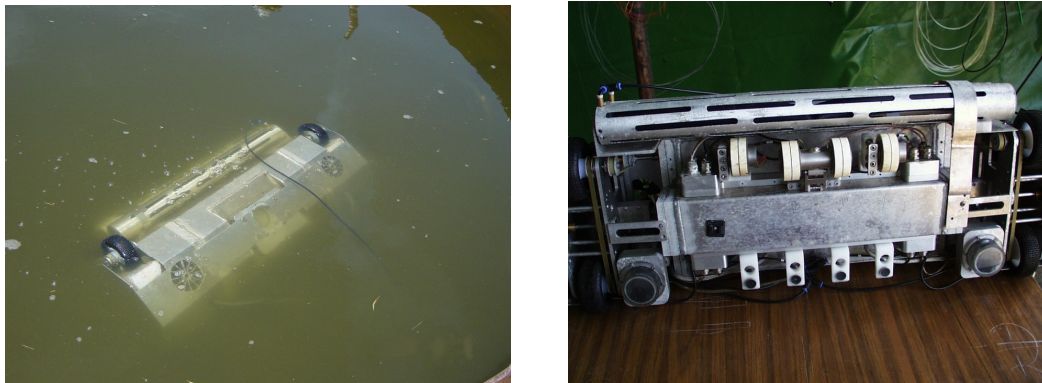
The dimensions of the mobile robot are 200x200x500 mm. The maximum travel speed is up to 150 mm/sec. The flaw detector is able to measure internal and external corrosion with a thickness resolution of 1 mm on plate thickness ranges from 6 to 25 mm.

Two servomotors provide the drive for the wheels of the vehicle while one propeller mounted on top of the vehicle provides the thrust force for adhesion to the wall. The on-board servo systems are controlled from outside the tank via a serial communications link. Trajectory control of the vehicle is by teleoperation via a Windows based software interface.

The umbilical comprises of two twisted pairs for serial full duplex communications to a remote station at a distance of 100 metres.

The vehicle design incorporates a sealed, purged and pressurised central box where the servo motors, controller cards, NDT instrumentation (24 channel TD Scan Flaw Detector), and navigation sensors are carried on-board the mobile robot to guarantee explosion proof working conditions.

The vehicle is able to travel on the tank floor while submerged in liquid (tests have been performed in water), change surfaces from the floor to a wall and vice versa, and climb the walls of a tank. It uses thrust from two propellers to provide vehicle adhesion to a vertical surface and hence is able to climb on all types of surface.



*Figure 5: ROBTANK showing its payload of ultrasonic probes (4 Wheel, 4 compression and 2 ROBULK)*

Two probe arrays, each 30cm long with 15 to 20mm pitch, are mounted to the front and rear of the inspection robot. The minimum detectable area is a 6mm diameter flat-bottomed hole at a range of 3 mm. A surface coverage of 3m<sup>2</sup> per minute and surface speed of 10 m per minute is realisable with this arrangement. The inspection system is able to measure plate thickness between 6-25mm with minimum thickness of 3mm. Two sets of 0° (in the front and rear of the vehicle) high efficiency twin wheel probes have been developed to cope with large crude oil tank inspection difficulties and environment conditions. They are designed to European Standard EN10160 (July 1999) for the UT examination of steel planar plates. Tests on single and twin crystal probes for scanning the surface with a fluid gap or direct contact, ability to monitor wall thickness despite changes in probe orientation, size of probe, frequency of element and coverage, and the influence of sludge, sand and other tank constituents resulted in the development of a Wheel probe system consisting of a high efficiency ultrasonic inspection twin wheel probe that in the preliminary laboratory tests showed a promising behaviour working in crude oil tank environment simulations.

Two ultrasonic rotating bulk wave probes are mounted on the two sides of the robot to speed up the discovery of potentially corroded areas in the plate with a look forward distance of 50 cm in water. The probe is motorized and encoded to produce a radar type B scan plot to detect the edges of tanks, welds, etc and can therefore be used for navigation. The sound wave dives under unattached obstacles and can therefore inspect under striker plates. Wheel probes that can penetrate debris and sludge on the tank floor provide quantitative data at the required rate.

A commercially available TD-Scan 24 channel flaw detector with dimensions of 170x60x104 mm is mounted in the purged box on-board the robot. The TD-Pocket integrates a pulser/receiver, A/D converter, encoder inputs (the requirement is for one bi-directional input to describe forward/backward travel), and 2 unidirectional encoders to control the LORUS probes). Software for data acquisition, display and analysis in all standard NDT formats is provided. The TD Pocket uses TTL signals from one of the robots incremental encoders to position stamp the NDT data.

An industrial version of RobTank, certified as intrinsically safe and able to perform reliable NDT, could

- Save 80% of the average cost of inspecting a storage tank i.e. 56,000 Euro per tank
- Provide, after a few days of in-service inspection, an initial indication of state of the tank floor and buried tank walls
- Enable a tank operator to plan an outage for repair and could prevent a mandatory 10 year outage when floor has not suffered from corrosion.

The other robot that we have developed for operation in liquids in storage tanks is the FPSO robot that is designed for inspecting tanks in off-shore oil operations - Floating Production Storage of Oil (FPSO). FPSO provides access to welds on stiffener plates inside oil storage tanks when the tank is either full of oil or emptied to the last few centimetres. It performs non-destructive testing of the welds using a number of NDT techniques. The robot is very compact, inserted through a manhole in the roof, and is able to swim to a test site on the floor of the tank. It is able to follow welds all the way along stiffener plates in a constrained space and find weld cracks and floor corrosion. It is designed to be intrinsically safe in Explosive Environments.

Figure 6 shows the FPSO swimming robot in a water tank. Vertical motion is controlled by depth sensor feedback and active buoyancy control. Horizontal motion is with two independently controlled thrusters. The robot descends to the tank floor and moves on the floor using wheels to follow weld lines along stiffener plates and walls.

The NDT techniques used are (a) ACFM for weld body inspection and for plate corrosion sizing between stiffeners (b) Ultrasound for weld toe inspection (using creep waves) and for plate corrosion detection (using plate waves).

The NDT payload comprises of ACFM probes for weld inspection (5 kHz with 8 sensors in 2 modules) and for corrosion sizing (50 kHz using 2 Bz coils). Two further sensors, a Sonatron S54008 plate wave sensor at 2 MHz and 65° refracted angle and a dual creep wave sensor : RTD Crst4 at 4 MHz, Dual element and 80° refracted angle.

Figure 6 shows the FPSO robot swimming in a water tank and its wheel arrangement for motion after the robot has landed on the floor of a tank. The wheels are rotated by 90 degree to allow the robot to move in an orthogonal direction to its present position.

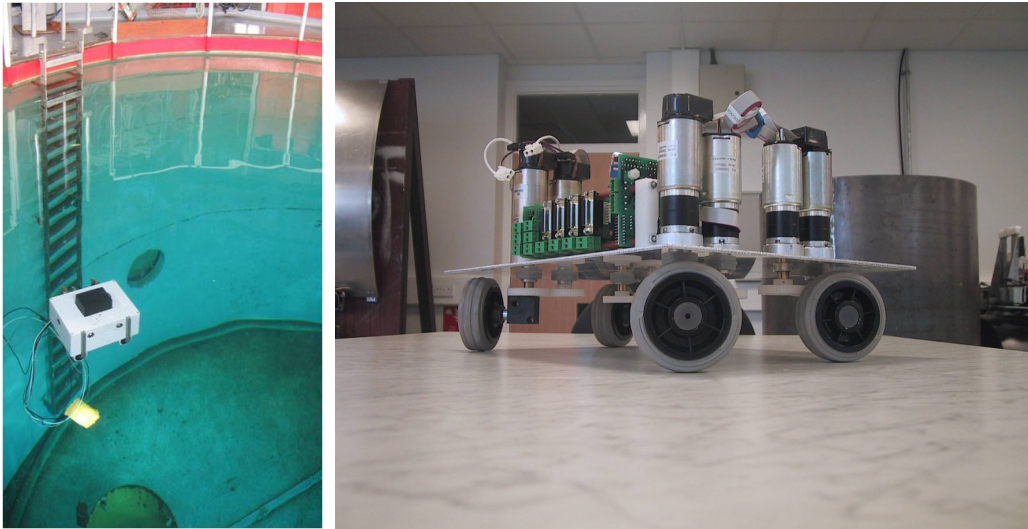


Figure 6: The FPSO robot and its wheel arrangement for motion on a tank floor

#### 4 RIMINI CLIMBING ROBOT

Reactor Pressure Vessels are inspected with an outage on average every 1-5 years. The inspection must not interfere with other maintenance tasks. NDT is performed with Ultrasonic and eddy current techniques.

Figure 7 shows the RIMINI wall climbing robot that is designed to inspect shell welds from inside a nuclear reactor pressure vessel (RPV) while submerged in water [11]. It provides access to nozzles to enable another pipe crawling robot to enter the nozzle pipe to inspect a circumferential weld located 700mm inside the nozzle. The robot is designed to withstand large doses of radiation. Two DC motors provide the drive actuation, 3 triangular suction cups provide adhesion to the RPV wall (3 air motors provide suction cup actuation).

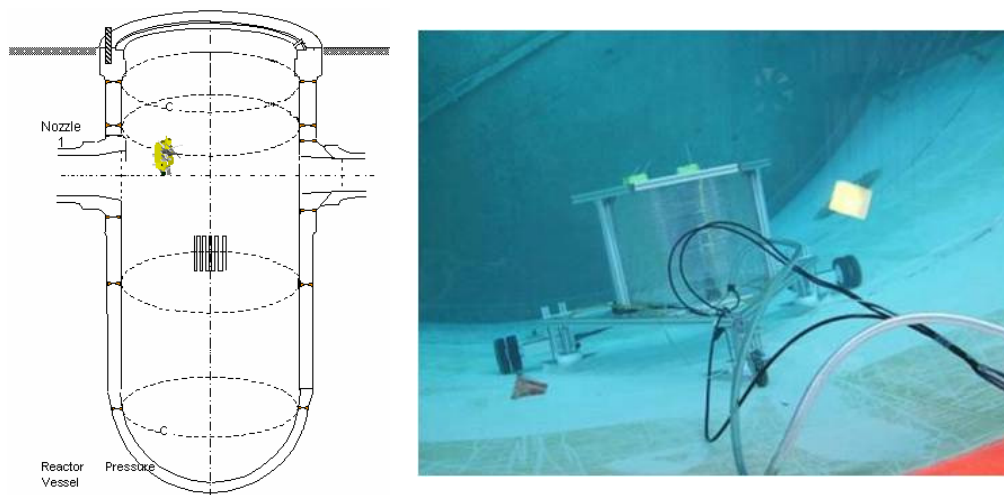


Figure 7: RPV showing location of shell, nozzle and circumferential weld (dotted lines) and the RIMINI wall climbing robot in water.

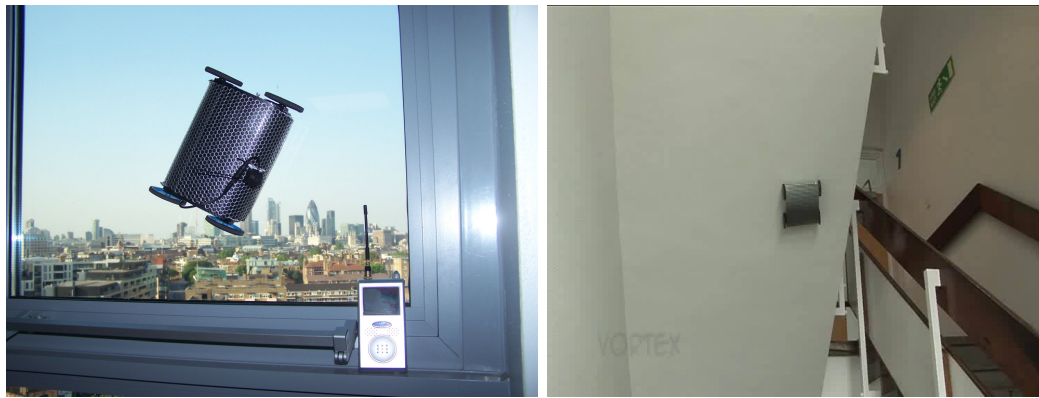
Welds in the RPV are classified as circumferential welds and nozzle welds. Circumferential welds are located at - flange to upper shell, upper shell to middle shell, middle shell to lower shell and lower shell to bottom head. Nozzle welds are located at - nozzle to middle shell, nozzle to nozzle pipe (so called safe end). Flange ligaments are also inspected. Some reactor vessels - vertical welds of reactor shell and safety injection nozzle welds are included in inspection

Most RPVs have at least six nozzles, the number of nozzle welds to be inspected is 12, and the number of circumferential weld inspections is sixteen. Thus many days are required to inspect one RPV.

The most difficult inspection is the circumferential weld located 700mm inside each nozzle. The nozzle diameter is 760mm at its opening and tapers to 540mm at weld location.

The system uses a ultrasonic multi-element phased array sensor and systems with 3D focusing capability for fatigue cracks, inclusions and other flaws

## 5 THE VORTEX ROBOT



*Figure 8: The VORTEX robot climbing on glass and concrete surfaces*

A wall climbing wheeled robot (shown in figure 8) that we have designed is able to climb on most types of surfaces by creating a negative pressure by spinning an impeller at 20,000 rpm or higher to generate a vortex. Its dimensions are that of an A4 page and its mass is 1kg with an additional payload of 200g comprising of a camera system. The robot is suitable for visual inspection of non-ferrous surfaces. It climbs reliably on brick, concrete and glass surfaces.

## 6 THE CONCEPT CLIMBING ROBOT

There is currently great interest in finding solutions to the in-situ inspection of wind blades. Wind turbine farms for sustainable electric power production are being planned worldwide. The largest wind turbines planned for the future will generate 5MW and involve fibre reinforced composite (FRP) blades up to 100m in length. Wind blades are subject to enormous stresses, especially in storm conditions in offshore locations. At the same time the use of FRP in safety critical structures located in such extreme environments is relatively new and it is likely that structural defects of a previously unknown nature may arise. Effective regular inspection for structural integrity inspection is thus essential. Access to offshore wind turbine blades poses tremendous problems, danger to human operatives and costs in the event of blades having to be taken out of service and transported to shore for scheduled inspections.



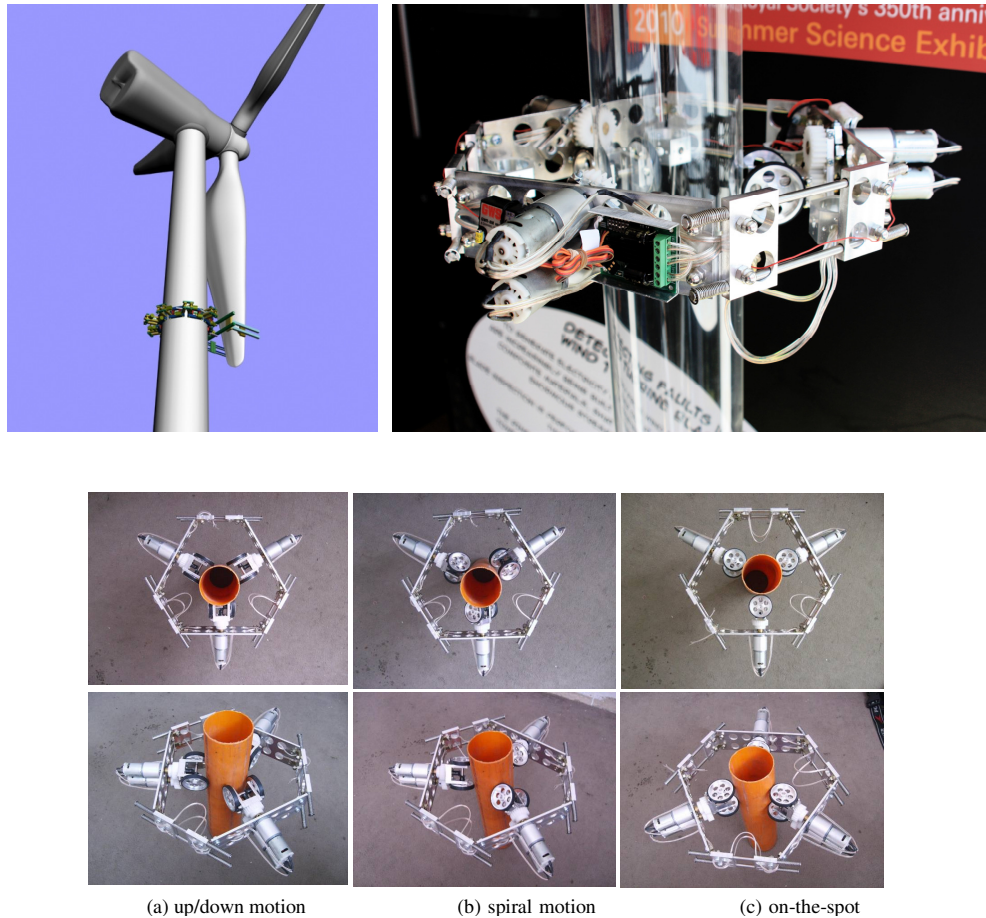


Figure 9: The CONCEPT ring climbing robot

Robotic in-situ blade inspection of offshore wind turbines is a promising solution. A climbing robot carrying a micro focus X ray source and digital detector could deploy radiography to test a blade. Computed axial X ray tomography has been identified as the optimal if not the only solution for identification of safety critical defects in the thickest blade sections. The weight of such an inspection system is very high, typically 200kg and typical cross sectional scanner dimensions of 1m x 2 m to encircle a blade, clearly involve very high destabilizing moments to be countered by the deployment robot.

Our solution <sup>[12]</sup> is a climbing ring robot completely encircling a turbine tower (typically 3 meter in diameter). Because of the size and thus development costs of such a huge robot, we have designed and prototyped a small scale model. The key design innovation is that the adhesive forces between the robot and climbing surface are provided entirely by mechanical means rather than by using the usual methods of vacuum suction or magnetic force.

Figure 9 shows the CONCEPT ‘ring’ climbing robot, funded by the European Commission <sup>[13]</sup> developed from several modular frames that decrease in diameter from 4.5 m to 3 m at the top of the tower. The system has a Cartesian scanning arm to scan the blades from the top of the tower to the bottom. The blade can usually be rotated to change its “pitch”. This ability is useful to turn the blade in the radiation beam to enable 3D computation of a defect. The robot is then moved to a new position to obtain new results along the blade.

The prototype has three modules which are completely identical and can be easily joined together to climb on any circumferential tube. The tower has a tapering radius. The robot is placed around the tower and it uses spring forces to grip it. Active force control could also be used to adapt to changing radius but this method has not been used here.

Each module uses two motors, one for the drive motion and the other to turn the angle of the wheel so that the robot climbing trajectory is spiral. The robot has the capability to face the driver wheels in different angles which means that the robot can either climb along the tube, see figure 9 (column a), or with a certain pitch angle it can spiral around the tube, figure 9 (column b), or if the wheel is turned through 90 degrees then the robot will not climb but it will rotate around the tube in the same spot, figure 9 (column c).

The prototype has been built to a linear scale of 1:10 (for both the robot and test pipe) and tested successfully performing the three types of motion i.e. up/down, spiral, and rotation on the spot. The robot weight is 3kg, the payload capacity is 2kg with a safety factor of 2 and maximum speeds of climbing and circumferential motions are 10m/min. In the full scale model the cross sectional area over which adhesive forces between the wheels and turbine tower could be developed would increase by a factor of 100 (assuming the wheel widths and diameters to be scaled up by a factor of 10 and the payload capacity can thus be potentially increases in the same proportion to about 200kg, the target figure. However, if necessary, adhesion forces can always be augmented in the full scale design by the inclusion of a number of rare earth magnet arrays.

## 7 CONCLUSION

The mobile robots presented here are designed to provide access to inspection sites on very large structures and/or test sites located in hazardous environments. The robots deploy sensors to implement an appropriate technique from the full range of NDT techniques to find defects such as cracks, inclusions, lamination debonding and the extent of corrosion on steel structures.

Robotic access both speeds up the inspection and reduces costs by eliminating the expensive and lengthy erection of scaffolding or the preparation of the site before humans can manually perform the inspection. Thus outage turnaround can be reduced or an outage prevented where the robotic inspection can be performed while the plant is in service.

Robotic deployment of NDT is the only means of performing testing where the test site is located in hazardous and dangerous environments.

## 8 RECOMMENDATIONS

There are numerous industrial inspection tasks requiring these types of inspection robots. Recent developments in cheap wireless control, mobile communications, improved battery technology and spatial positioning systems now offers the means to build small umbilical-free mobile robots that can be deployed cheaply and quickly to go to a remote test site, gather NDT data, stamp its position and have it analyzed in real-time by an operator sitting safely some distance away.

Further research and development is required to develop robots to go inside petro-chemical storage tanks (while full of product) to inspect floors for pitting and corrosion, to climb on the hulls of steel ships to inspect hundreds of kilometres of weld, to inspect the walls of petro-chemical storage tanks for corrosion and weld integrity, to inspect nozzle welds inside nuclear pressure vessels, to inspect structures such as dams and

bridges for cracks, to inspect overhead power cables, to internally inspect buried pipelines that are currently not reachable by intelligent pigs, to climb up off-shore wind turbine towers to inspect the blades, and to climb on aircraft wings and fuselage to detect for cracks and loose rivets.

## 9 ACKNOWLEDGEMENTS

The support of the European Commission under projects COOP-CT-2006-032949, and NMP2-CT-2005-017509 is gratefully acknowledged, and Nueva Granada Military University of Colombia for sponsoring Dr Leon Rodriguez.

## 10 REFERENCES

- 
- [1] Sattar, T., Robotic Non Destructive Testing, Viewpoint: Robotic non destructive testing, Special issue on NDT Robots, In Industrial Robot: An International Journal, Vol.37 , No. 5, 2010, Emerald Group Publishing Limited, ISSN 0143-991X
  - [2] Sattar, T.P., Leon Rodriguez, H.E., Shang,J., Mondal, S., Chen, S., Bridge. B. and Zhao, Z., Mobile wall climbing and swimming robots to inspect aircraft, storage tanks, pressure vessels and large infrastructure, 24<sup>th</sup> ISPE International Conference on CAD/CAM, Robotics and Factories of the Future (CARS&FOF), Koriyama, Japan, 29-31July 2008
  - [3] Sattar, T.P. Wall Climbing Crawlers for Nondestructive Testing, Topics On Nondestructive Evaluation (TONE), Volume 4, Automation, Miniature Robotics and Sensors for Nondestructive Evaluation and Testing, Chapter 3.4: pp. 77-100, Technical Editor: Yoseph Bar-Cohen, ASNT, ISBN:1-57117-043-X
  - [4] European FP6 STREP programme CROCELLS Contract No. NMP2-CT-2005-017509, Climbing Robot Cell for Fast and Flexible Manufacture of large Scale Structures
  - [5] Shang, J., Bridge, B., Sattar, T.P., Mondal, S., Brenner, A., Development of a climbing robot for the NDT of long weld lines, Industrial Robot: An international Journal, Volume 35 Issue 3, 2008, Emerald Group Publishing Ltd., ISSN 0143-991X
  - [6] Mondal, S.C., Bryan, B., Sattar T. P., Patel, T., Remote mobile vehicle and its suitable non destructive testing (NDT) inspection methods for the melt weld inspection, Proceedings of 13th International Conference On Climbing and Walking Robots and the Support Technologies for Mobile Machines, 2010
  - [7] Sattar, T.P., Leon-Rodriguez, H.E., Shang, J., Amphibious NDT Robots, Chapter 6 Climbing and Walking Robots, Towards New Applications, International Journal of Advanced Robotics Systems, 2006, ISBN 978-3-902613-16-5, 24 pages
  - [8] Berger,A., Knape, B.,Thompson, B., Development of a Remote Tank Inspection (RTI) Robotic System, Proceedings of 1990 American Nuclear Society Winter Meeting,Washington D.C., November 1990
  - [9] Schempf H. (1994). Neptune-Above-Ground Storage Inspection Robot System, Proceeding of IEEE International Conference on Robotics and Automation, San Diego, Vols 1-4, Part 2. pg. 1403-1408
  - [10] Maverick Demonstration “Submarine that goes in Gasoline”, Solex Robotics, <http://www.solexrobotics.com/Solex6.html>
  - [11] Leon Rodriguez, H., Sattar, T.P., Jianzhong, S., Underwater Wall Climbing Robot For Nuclear Pressure Vessel Inspection, Advances in Mobile Robotics, Proceedings of Eleventh International Conference On Climbing and Walking Robots and the Support Technologies for Mobile Machines, Coimbra, Portugal 8-10 Sept 2008, pp 605-612,

- 
- Editors: L. Marques, A de Almeida, M.O. Tokhi and G.S. Virk, World Scientific ISBN-13 978-981-283-576-5, ISBN-10 981-283-576-8
- [12] Sattar, T.P., Leon Rodriguez, H.E. and Bridge, B. Climbing Ring Robot for inspection of off-shore wind turbines, *Industrial Robot: The international journal of industrial and service robotics*, Number 4 Mobile robots + CLAWAR, Vol. 36 No. 4, 2009, pp326-330 Emerald Group Publishing Limited, ISSN 0143-991X
- [13] European CRAFT project CONCEPT-INSPECT, “Computerised Open Environment Portable Tomography”, 6th Framework Programme CRAFT COOP-SME: COOP-CT-2006-032949.