

Modelling and Forecasting the Kurtosis and Returns Distributions of Financial Markets: Irrational Fractional Brownian Motion Model Approach.

Gurjeet Dhesi and Bilal Shakeel

School of Business, London South Bank University

London, SE1 0AA, United Kingdom

Gurjeet Dhesi: dhesig@lsbu.ac.uk

[+442078157090](tel:+442078157090)

Bilal Shakeel: shakeem2@lsbu.ac.uk

+442078157442

Marcel Ausloos

School of Business, University of Leicester

Leicester, LE1 7RH, United Kingdom

Marcel Ausloos: Corresponding Author ma683@le.ac.uk

+441162522522

Modelling and Forecasting the Kurtosis and Returns Distributions of Financial Markets: Irrational Fractional Brownian Motion Model Approach.

Summary

This paper reports a new methodology and results on the forecast of the numerical value of the fat tail(s) in asset returns distributions using the Irrational fractional Brownian Motion Model. Optimal model parameter values are obtained from fits to consecutive daily two-year period returns of S&P500 index over [1950-2016], generating 33-time series estimations. Through an econometric model, the kurtosis of returns distributions is modelled as a function of these parameters. Subsequently an auto-regressive analysis on these parameters advances the modelling and forecasting of kurtosis and returns distributions, providing the accurate shape of returns distributions and measurement of Value at Risk.

Keywords:

Financial Forecasting and Simulation (G12)

Asset Pricing (G17)

Simulation Modelling (C63)

Financial econometrics (C58)

1. Introduction

Researchers have put much effort into developing ways of accurately modelling the returns distributions for financial market indices. The literature is so enormous that to quote a few papers would lead to consider that the present authors are biased, thus, it is assumed that the reader is aware that indeed there are many papers available. Nevertheless, let us stress that among the stylized facts of returns distributions in financial markets, one of the most well-known is the early recognized so-called fat tail (Mandelbrot, 1963b). It is still somewhat unclear why a fat tail exists, with some decay exponent values in limited ranges, even in presence of varied volatility occurrences or origins, like time lags (Ausloos and Ivanova, 2003; Castellano et al., 2018). An often mentioned argument stems from the asymmetry of information, but not easily accepted if one sticks to the “efficient market hypothesis” (EMH) (Borges, 2010; Schinckus et al., 2016). Nevertheless, we do assume that an asymmetric information flow exists, not yet discounting an asymmetric time lag for such flows.

A classical Bachelier random walk model would suggest a Brownian motion analogy for the returns r_t at time t , the so called Geometric Brownian Motion (GBM) (Mandelbrot, 1963b; Mills and Markellos, 2008; Rachev et al., 2005; Birge & Linetsky, 2007).

$$r_t = \ln\left(\frac{P_t}{P_{t-1}}\right) = \mu + \varepsilon_t \quad \varepsilon_t \square NID(0, \sigma^2) \quad (1)$$

where μ is the averaged returns over the time interval $[0, t]$, and ε_t is assumed to be normally independently distributed with zero mean and constant variance. The above equation can be written as

$$P_{t+\delta t} = P_t \exp(\mu\delta t + \sigma Z_t \sqrt{\delta t}) \quad (2)$$

where Z_t is a random number drawn from the standardised normal distribution, δt is a small-time step and σ is the standard deviation of the returns over the time interval $[0, t]$. This equation is deployed to run simulations and construct the modelled returns distributions based on the GBM.

Usually, the distribution of returns generated from GBM model does not match the distribution of historical returns data which often show leptokurtosis. The usual returns fat-tailed distributions show a power law decay in the tail: if the skewness is greater than 1.0 (or less than -1.0), the skewness is substantial and the distribution is far from symmetrical. Moreover, a flat distribution has a negative kurtosis, while a distribution which is more peaked than a Gaussian distribution has a positive kurtosis (Mills, 1995).

It is widely recognized that the use of distribution higher moments, such as skewness and kurtosis, can be important for improving the performance of various financial models (Mills, 1995; Harvey and Siddique, 1999; Peiró, 1999; Bera and Premaratne, 2001). Responding to this recognition, researchers and practitioners have started to incorporate these high moments into models, mostly using conventional measures, e.g. the sample skewness and/or the sample kurtosis. Models of conditional counterparts of the sample skewness and the sample kurtosis, based on extensions of the generalized autoregressive conditional heteroskedasticity (GARCH) model

(Engle, 1982), have also been developed and used; see, for example, Leon et al. (2004).

Moments of asset returns of order higher than 2 are important because these permit recognitions of the multi-dimensional nature of the concept of risk (Das and Sundaram, 1999). Such higher order moments have been proved useful for asset pricing, portfolio construction, and risk assessment. See, for example, Hwang and Satchell (1999) and Harvey and Siddique (2000). High order moments that have received particular attention are the skewness and kurtosis, which involve moments of order three and four, respectively. Indeed, it is widely held as a "stylized fact" that the distributions of stock returns exhibits both left skewness and excess kurtosis (fat tails); there is a large amount of empirical evidence to this effect. See for example, Groeneveld and Meeden (1984) or Critchley and Jones (2008).

Furthermore, distributions containing parameters that control skewness and/or kurtosis are attractive since they can accommodate asymmetry and "flexible tail" behaviour (Rubio and Steel, 2014). These distributions are typically obtained by adding parameters to a known symmetric distribution through a parametric transformation. General representations of parametric transformations have been proposed in Ferreira and Steel (2006) as "probability integral transformations", Ley and Paindaveine (2010) as "transformations of random variables" and Jones (2014a) as "transformations of scale". Transformations that include a parameter that controls skewness are usually referred to as "skewing mechanisms" (Ferreira and Steel, 2006; Ley and Paindaveine, 2010), while those that add a kurtosis parameter have been called "elongations" (Fischer and Klein, 2004), due to the effect produced on the shoulders and the tails of the distributions. Some members of this class are the Johnson SU family (Johnson, 1949), Tukey-type transformations such as the g-

and-h transformation and the Lambert W transformation (Hoaglin et al., 1985; Goerg, 2011), and the sinh-arcsinh transformation (Jones and Pewsey, 2009). These sorts of transformations are typically, but not exclusively, applied to the normal distribution. Alternatively, distributions that can account for skewness and kurtosis can be obtained by introducing skewness into a symmetric distribution that already contains a shape parameter. Examples of distributions obtained by this method are skew-t distributions (Hansen, 1994; Fernandez and Steel, 1998; Azzalini and Capitanio, 2003; Rosco et al., 2011), and skew-Exponential power distributions (Azzalini, 1986; Fernandez et al., 1995). Other distributions containing shape and skewness parameters have been proposed in different contexts such as the generalized hyperbolic distribution (Barndorff-Nielsen et al., 1982; Aas and Haff, 2006), the skew-t proposed in Jones and Faddy, 2003; and the α -stable family of distributions. With the exception of the so called "two-piece" transformation (Fernandez and Steel, 1998; Arellano-Valle et al., 2005), the aforementioned transformations produce distributions with different shapes and/or different tail behaviour in each direction. Surveys on families of "flexible tail" distributions can be found in Jones (2014) and Ley (2015). Other approaches used to produce so called flexible models are semi-parametric models (Quintana et al., 2009) or fully nonparametric models (e.g. kernel density estimators and Bayesian nonparametric density estimation).

Understanding what is happening as well as risk control and management is and continues to be an urgent challenge for investors and researchers alike. One should mention here that numerous problem-solving strategies can be drawn from Operations Research to apply in Finance and related sub-categories. Financial Engineering takes on the developing and implementation of innovative ideas for

financial products. For example exploring the financial risk of temperature index by Castellano et al., 2018. In Portfolio Theory minimising risk and maximising returns; (classic optimisation scenario) like Value at Risk (VAR) measure for managing risk (Elliott and Siu 2010). In Financial Instruments pricing and risk management of complex financial instruments, the seminal Black-Scholes Model and its numerous variations including the one developed by Guillaume (2018) and Elliott and Siu (2010) is the one of many examples, also application of Monte Carlo simulations (applied in this paper simulate returns) to analyse the behaviour of these financial instruments. High-Frequency Trading probably the prime example of OR being put into use in Finance. Certain strategies consider optimal order size, optimal trading signal, optimal trading times, etc. to calculate tiny statistical discrepancies in the market and trade on them as explained in Kurrum et al., 2018. Moreover, the Brownian Motion and its different variations/extensions have been extensively applied to model the various operations research, management science and computational problems as highlighted in Ormici et al., (2008), Harrison et al., (1983), Zacharias and Armony, (2016), Lucheroni and Mari, (2018), Miao et al., (2016), Zheng et al., (2016) amongst others.

Moving theories away from classical Geometric Brownian Motion has become a necessity. Hence asset modelling as in Leon et.al. (2002) and Corcuera et.al. (2003) financial asset models has been also addressed by the development of Normal Inverse Gaussian Levy Process providing the explanation of the empirical scaling power law as in Barndorff-Nielson 1997, 1998a, 1998b; Barndorff-Nielson and Prause, 2001. Levy processes combined with jump models have been developed and applied for financial asset modelling as in Leon et al., (2002) and Corcuera et al., (2005). In fact, Levy walks (Mantegna, 1991) were discovered as potential

causes ruling the stock market noticing a breaking of the central limit theorem (further to be replaced by the Levy-Khinchine one). This discovery meant that the world could enter an age of significantly increasing risk of financial market investments: not only huge losses but also colossal profits could be possible. The Mantegna discovery (Mantegna, 1991) opened the eyes to non-Gaussian processes on financial markets focusing on the non classical Brownian or non-Wiener random walks. Among these is the identification of empirical regularities and canonical stylized facts (Dacorogna et al., 2001) bearing upon new scaling laws (Di Matteo et al., 2003; Di Matteo et al., 2005) emphasizing long term memories. Alongside these numerous studies have also applied Fractal Brownian Motion, which takes into account the dependant increments and possesses long-range dependence and self-similarity properties, to model the underlying asset. Some of these works include Castellano et al., 2018; Kloeden et al., 2011; Funahashi and Higuchi, 2017; Siu, 2012; Elliott and Siu, 2010; Puu, 1992; Tapiero and Vallois, 2018 amongst others.

However, recent papers use a quite innovative approach for doing so (Dhesi et al., 2011; Dhesi et al., 2016; Dhesi and Ausloos, 2016). This is achieved by adding an extra stochastic function, with only two parameters (k and c) to be estimated, to the GBM, incorporating a weighting factor (see equation (5) here below). The introduction of such (up to now) parameters can be easily argued, see below in Sect.1. Interestingly, this type of modelling is endogenous and part of some coherent understanding of the market process, i.e. taking into account some so called irrationality of agents. Feedback and success of “irrational investors” are for example reported in Hershleifer et al. (2006). Such a psychological behaviour is sometimes

accepted as common knowledge that is as a realistic possibility, but hardly included in models.

The Irrational Fractional Brownian Motion (IFBM) modelling captures the fat tails and overall leptokurtosis (Dhesi et al., 2016; Dhesi and Ausloos, 2016). Therefore, it can be claimed that the model makes a fully pertinent connection between the extra function and so called irrational behaviour of financial markets.

In light of such premises, and in view of predicting/explaining the exponent of the fat tails, the paper is organized as follows. Section 2 briefly outlines the Geometric Brownian Motion model, for completeness, while Section 3 explains the novel Irrational Fractional Brownian Motion model. Section 4 explains the methodology of using the irrational fractional Brownian motion for modelling and forecasting the kurtosis of returns distributions. The fine results obtained from this method are summarized and further discussed in Section 5.

2. Geometric Brownian Motion model

Eq. (2) can be also written as

$$\frac{dP}{P} = \exp(\mu dt + \sigma Z \sqrt{dt}) - 1 \quad (3)$$

Applying Ito's Lemma (Merton 1975, Gardiner 1985, Heston 1993), the equivalent form of Eq. (3) is expressed as

$$\frac{dP}{P} = \alpha dt + \sigma Z \sqrt{dt} \quad \text{where } \alpha = \mu + \frac{1}{2} \sigma^2 \quad (4)$$

The above model, equations. (1) - (4), provides the foundations of classical quantitative finance. As mentioned here above, the problem is that the distributions of returns generated from this GBM model does not match the distributions of historical returns data, - which often show leptokurtosis.

3. Irrational Fractional Brownian Motion model

Continuously compounded returns over k periods are given by

$$r_t(k) = \ln\left(\frac{P_t}{P_{t-k}}\right) = \ln\left(\frac{P_t}{P_{t-1}} \frac{P_{t-1}}{P_{t-2}} \dots \frac{P_{t-k-2}}{P_{t-k-1}} \frac{P_{t-k-1}}{P_{t-k}}\right)$$

The following additivity equation shows that the continuously compounded return over k periods can be written as

$$r_t(k) = \ln\left(\frac{P_t}{P_{t-1}}\right) + \ln\left(\frac{P_{t-1}}{P_{t-2}}\right) + \dots + \ln\left(\frac{P_{t-k-2}}{P_{t-k-1}}\right) + \ln\left(\frac{P_{t-k-1}}{P_{t-k}}\right)$$

Also, this sum also comes in useful when returns may diverge from normal distribution. As in this case the central limit theorem shows that the sample average of the sum will converge to the normal distribution.

However, this is only the case over the longest of time periods, such as annual returns (Ausloos and Ivanova, 2003). One argument could be as follows. Price-influencing events may be normally distributed, but the likelihood of said events being reported in the news increases with the magnitude of the impact of the event. For the latter distribution, one can factor in the tendency for the media to simplify and exaggerate the news implication. When multiplying the normal distribution by the distribution according to a function modelling, the likelihood/duration/impact of such news reports leads to a much fatter-tailed distribution than a Gaussian (Dhesi et al., 2011).

After extensive simulations and analyses, Dhesi et al. (2016) proposed the Irrational Fractional Brownian Motion (IFBM): in order to manage such aspects; it reads

$$P_{t+\delta t} = P_t \exp(\mu\delta t + \sigma Z_t \sqrt{\delta t} + \mu K f(Z_t) \delta t)$$

or

$$P_{t+\delta t} = P_t \exp(\mu\delta t + \sigma Z_t \sqrt{\delta t} - k f(Z_t) \delta t) \quad k = -\mu K \quad (5)$$

By comparing equations (4) and (5) one can observe that the GBM modifying function is

$$f(Z) = (2 \exp(-c \frac{Z^2}{2}) - 1) \arctan(Z) \quad (6)$$

shown in Fig. 1

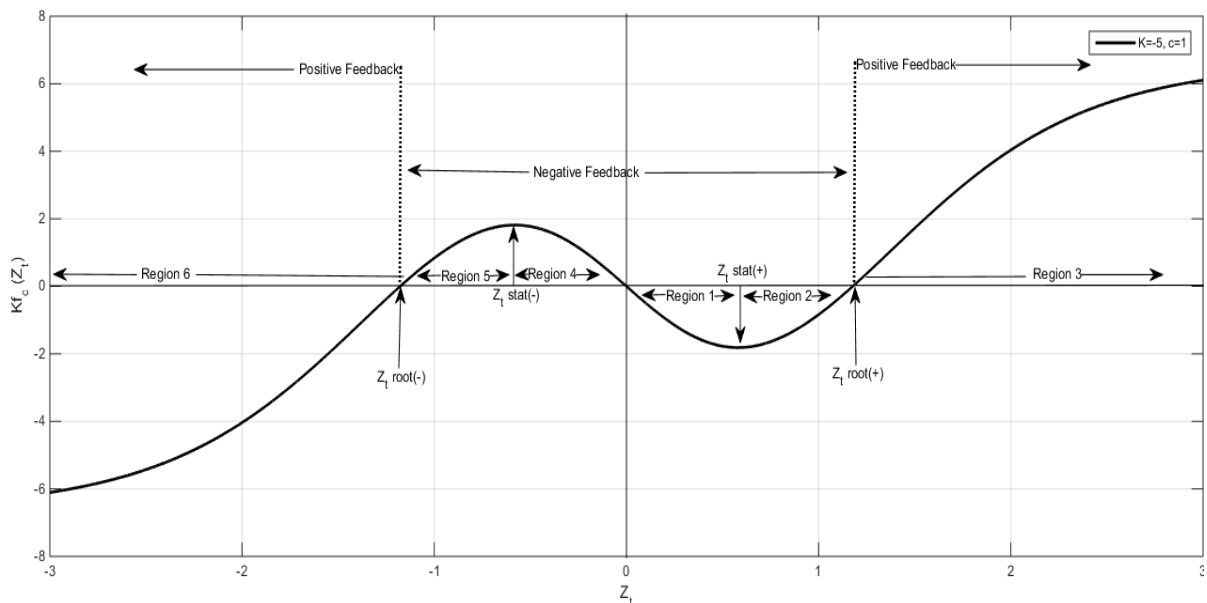


Fig.1: Plot of the response/feedback $f(Z)$ function, Eq. (6) emphasizing the various regions of interest

(Source: Dhesi & Ausloos, 2016)

In understanding how the function $f(Z)$ is achieved one needs to look at the shape of the function that is desirable. The shape of the function that is desirable is presented

in figure 1. An analytic expression of a function that achieves such a shape is expressed by equation 6.

Part of the function $f(Z)$ that is bounded by the roots, the so-called negative feedback area, will peak the returns distribution whereas the parts of the function $f(Z)$ beyond the roots, the so-called positive feedback area will fatten the tails. Hence overall turning a mesokurtic (normal) distribution into a leptokurtic distribution. Full details regarding this can be found in Dhesi and Ausloos (2016).

The function $f(Z)$ contains two parameters namely k and c . Parameter k increases the amplitude of the function whereas the parameter c changes the positioning of the roots of the function. Optimal k and c are selected by performing extensive simulations, such as to find the best possible fit using chi squared goodness of fit calculations to the specific data set. Full details regarding this can be found in Dhesi et al. (2011).

There could be many other such non-linear combinations which would generate similar shapes. However, it was found (Dhesi et al., 2011) that simulations based on this model (equations (5) and (6)) provided the best k and c tail parameterization, by using Chi-square test. As an example, Figure 2 illustrates the GBM and IFBM (with optimal k and c) best fitted on two-year daily S&P500 data over 2010-2011.

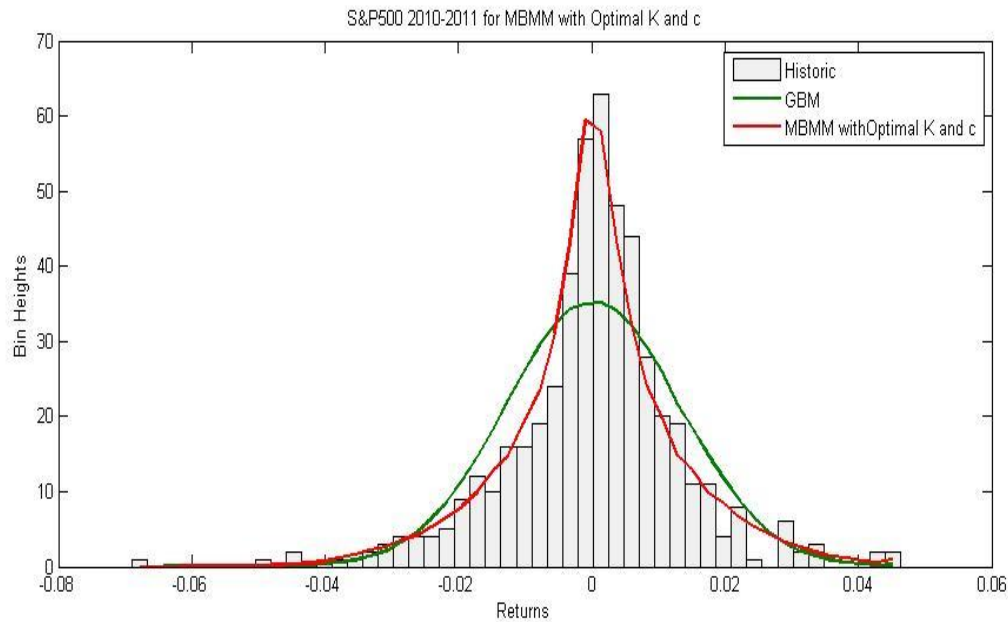


Fig. 2: GBM and IFBM, with optimal k and c, best fitted two-year daily S&P500 data over 2010-2011.

(Source: Dhesi et al., 2016)

It can be seen that the (red) IFBM curve is very close to the historical histogram leading to a much better fit than the (green) GBM curve. This was verified by running a chi-square goodness of fit test on the historical data (observed frequency) with respect to simulations from the GBM and the IFBM (corresponding expected frequencies).

One possible explanation as of why GBM is transformed into IFBM can be deduced by looking into the shape of $f(Z)$, on Fig. 1. For simplicity, we may notate that the values bounded by the Z-roots are “small” values of Z and “large” values to be away from roots in either direction. Therefore, the returns generated by “small” Z-values cause the peak of the distribution as the magnitude of returns is diminished; this can be linked to the negative feedback region of $f(Z)$; on the other hand, the returns generated by “large” Z-values shape the fat tails of the distribution.

4. Forecasting Kurtosis and Returns Distribution

As IFBM seems to capture the leptokurtosis or fat tails of returns distributions, a question arises about the link between the distribution kurtosis and the parameters k and/or c .

In order to determine such a link, we present analysis on daily S&P500 index data from 1950 to 2015 as follows. The sample consists of 33 “2-year daily data” non-overlapping windows, from the time interval [1950-2015]. In the notation below “t [1, 33]” refers to the t^{th} data window.

$$\ln(Kurt_t) = 1.66 + 0.078\ln(k_t) - 0.079\ln(c_t)$$

standard errors: (0.10) (0.02) (0.03)

t-statistics: 16.47 4.97 2.74

The data set is reduced to 32 points¹ (up to 2013) in view of forecasting the kurtosis of 2014-15 and comparing with the actually realized value (refer to Table 1). A significant statistical econometric relationship is found between the logarithmic kurtosis and the logarithmic k and c values as given by:

¹ Equation (7) is different from Equation (6), as in Equation (7) only 32 data points rather than 33 data points. The 33rd data point is treated as ex-post such that we can compare the 33rd point data from Table 1 with forecast as shown in Table 2.

$$\ln(Kurt_t) = 1.66 + 0.078 \ln(k_t) - 0.081 \ln(c_t) \quad (7)$$

standard errors: (0.10) (0.03) (0.02)

t-statistics: 16.05 4.89 2.73

In order to complete the model and verify its robustness, we explore whether there is an autoregressive process on k and c , i.e. whether future k and c values can be forecasted from the past values.

It is found that a basic time series analysis for values of k does not produce an AR process on k due to a small t-statistics on lagged value of k ; one finds

$$k_t = 0.002 + 0.259k_{t-1}$$

Standard errors: (0.0006) (0.174)

t-statistics : 3.02 1.49

However, it is found that there is an AR process on c with a significant t-statistics test on one period lagged c :

$$c_t = 0.180 + 0.422c_{t-1} \quad (8)$$

Standard errors: (0.06) (0.17)

t-statistics : 3.04 2.53

The non-significance of the AR processes on k proves a stumbling block in using the forecast model equation (7), which leads to request some further investigation. One possibility is to check the AR process on the ratio k/c , - since c is AR and k is not. This is also inspired by a further analysis of Eq. (7). This is also confirmed by modelling the logarithmic kurtosis by the logarithmic ratio (k/c), which produces the following results:

$$\ln(Kurt_t) = 1.66 + 0.08 \ln\left(\frac{k_t}{c_t}\right) \quad (9)$$

The ratio (k/c) when interestingly plotted over time for the sample (see Fig.3) produces a picture indicating a smooth pattern with occasional outliers.

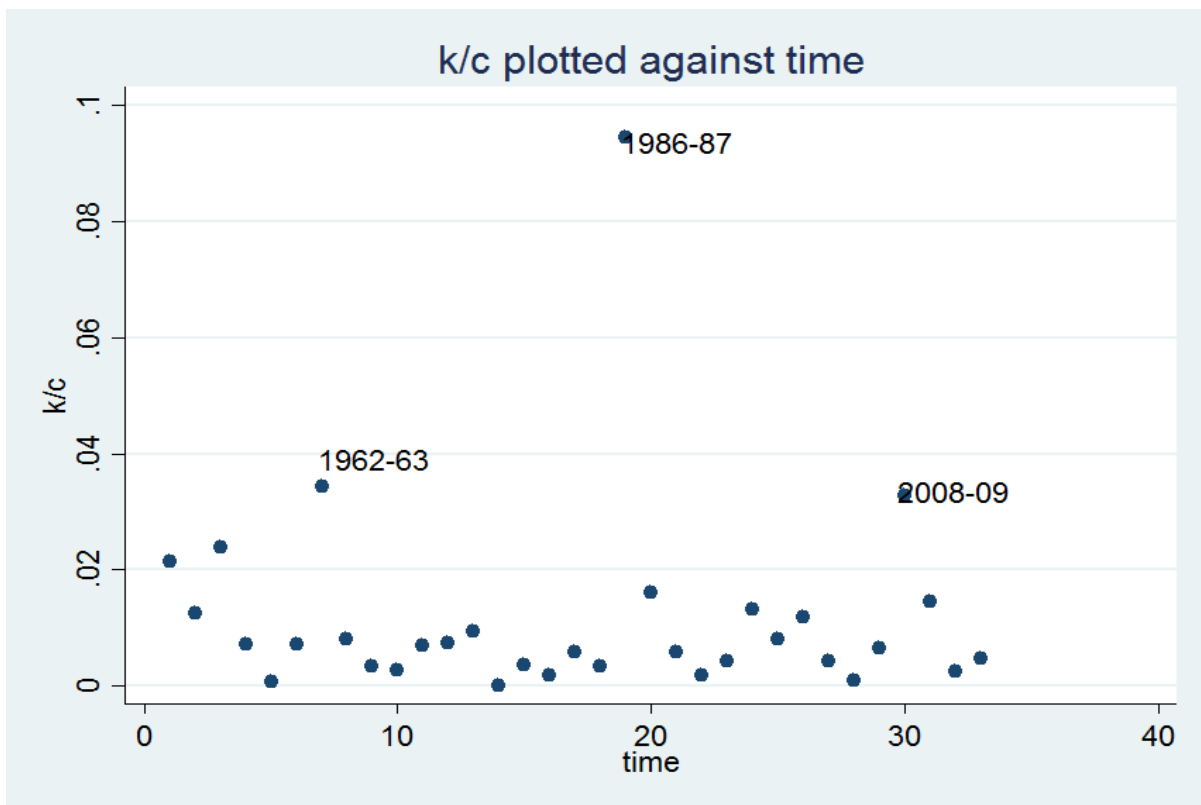


Figure 3: Scatter plot of (k/c) values with corresponding 2-year time periods, between $t = 1$ (for Jan 01, 1950 – Dec 31, 1951) till $t = 33$ (for Jan 01, 2014- Dec. 31, 2015)

These outliers occur at market crash years, that is the Cuban missile crisis (1962), the financial crisis (1987) and the subprime mortgage crisis (2008), i.e., extreme events

indicating an *a priori* unexpected high ratio. This means that extreme events are well modelled by an IFBM with large $\left(\frac{k}{c}\right)$ value. The results are summarised in Table 1.

				Historical	GBM	IFBM
Time Window	c	k	k/c	Kurtosis	Kurtosis	Kurtosis
1950-1951	0.1	0.002	0.0215	3.572159	2.99851	3.63634
1952-1953	0.1	0.001	0.0125	3.728461	3.03216	3.58129
1954-1955	0.1	0.002	0.0239	5.930774	2.98839	5.87982
1956-1957	0.3	0.002	0.0073	3.437844	2.98328	3.60893
1958-1959	0.1	8E-05	0.0008	3.307019	2.91947	3.12327
1960-1961	0.2	0.001	0.0071	3.581607	3.09118	3.59623
1962-1963	0.1	0.003	0.0344	4.267800	2.88745	3.98187
1964-1965	0.1	8E-04	0.0081	3.535882	2.90662	3.37264
1966-1967	0.4	0.001	0.0034	3.426431	2.84707	3.26054
1968-1969	0.1	3E-04	0.0027	2.995724	2.76098	2.83976
1970-1971	0.4	0.003	0.0069	3.440020	2.76787	3.47213
1972-1973	0.2	0.001	0.0074	3.315984	2.87283	3.27081
1974-1975	0.1	9E-04	0.0095	3.020921	2.88448	3.04110
1976-1977	0.1	9E-06	9E-05	2.908024	2.86528	2.84191
1978-1979	0.3	0.001	0.0037	3.216504	2.93092	3.23772
1980-1981	0.3	6E-04	0.0019	2.967555	2.80431	2.91500
1982-1983	0.2	0.001	0.0059	3.139087	2.86101	3.09164
1984-1985	0.3	0.001	0.0033	3.411969	2.84173	3.12957
1986-1987	0.1	0.009	0.0945	4.824096	2.59039	4.54390
1988-1989	0.2	0.003	0.0160	3.953239	2.93867	3.77569
1990-1991	0.3	0.002	0.0059	3.235887	2.91430	3.30811
1992-1993	0.7	0.001	0.0019	3.343758	2.83918	3.24248
1994-1995	0.4	0.002	0.0042	3.564686	2.98539	3.62970
1996-1997	0.2	0.003	0.0132	3.570610	2.96275	3.60373
1998-1999	0.3	0.002	0.0082	3.480683	3.01699	3.45123
2000-2001	0.2	0.002	0.0119	3.319048	2.95830	3.33218
2002-2003	0.6	0.003	0.0043	3.398068	2.90596	3.24078
2004-2005	1.1	9E-04	0.0009	3.159916	2.97078	3.16851
2006-2007	0.5	0.003	0.0064	4.071763	2.99778	3.80458
2008-2009	0.3	0.010	0.0328	4.320958	2.96258	4.11278
2010-2011	0.4	0.006	0.0145	3.937480	2.84927	3.87489
2012-2013	0.6	0.001	0.0025	3.488274	2.86441	3.25203
2014-2015	0.5	0.002	0.0048	3.639081	2.98048	3.57924

Table 1: comparison of Kurtosis from historical returns data, with GBM and IFBM; outliers are emphasised and underlined; the corresponding historical kurtosis is clearly much better estimated from the IFBM.

However, there does not seem to be an AR process on (k/c) with insignificant t-stat. In fact, a graph of (k/c) with one period lagged values (see Fig.4) presents a fanning out process, hinting the presence of heteroscedasticity like effect. Therefore, we perform the variable transformation to eradicate this heteroscedasticity like effect.

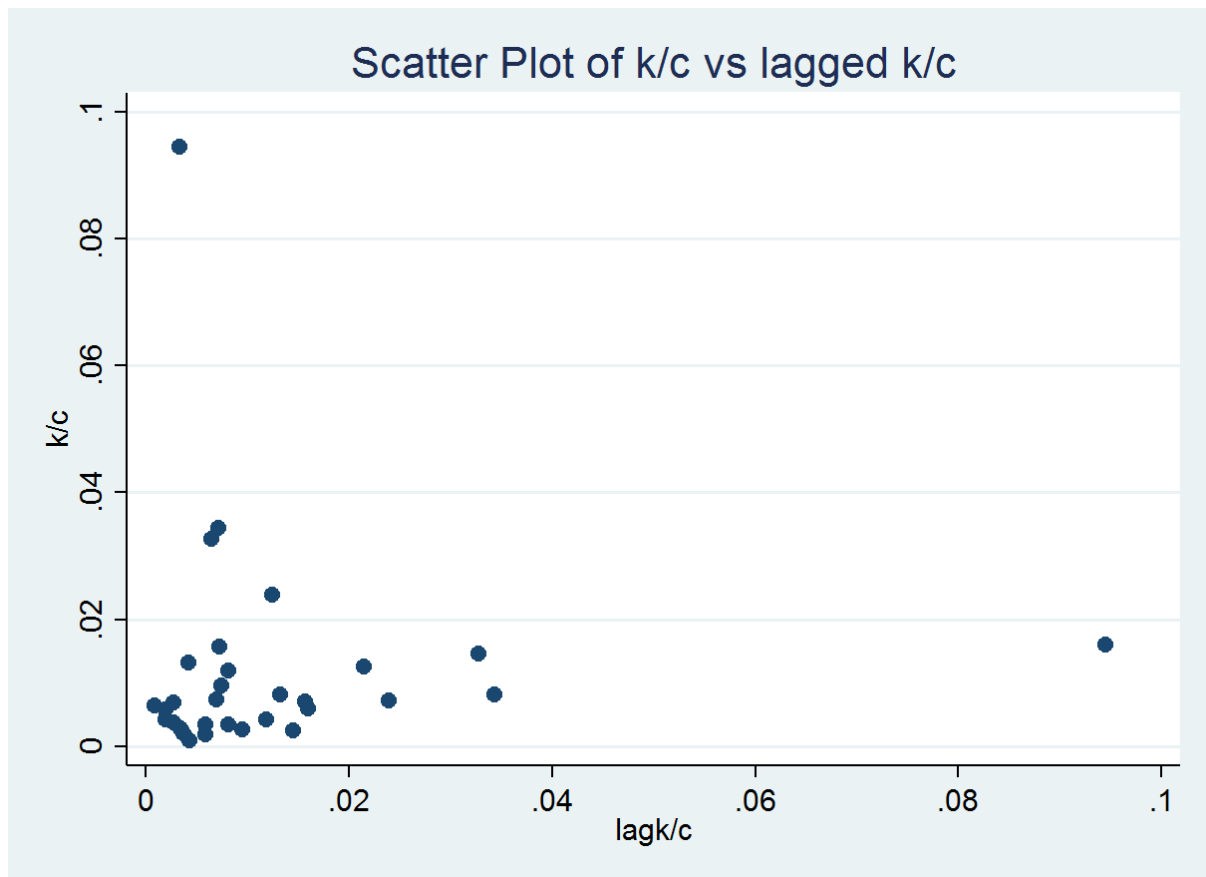


Fig. 4: Scatter Plot of k/c versus one period lagged k/c .

In so doing, the transformed version of (k/c) does have an AR process on ratio (k/c) with a significant t-stat of 5.18; the result reads:

$$\frac{[k/c]_{t+1}}{\sqrt{[k/c]_t}} = 0.004\sqrt{[k/c]_t}^{-1} + 0.465\sqrt{[k/c]_t} \quad (10)$$

Applying the 1-step forecast for the kurtosis of 2014-15 using equations (8),(9) and (10). a 3.53 kurtosis value is predicted; this is in very good agreement with the kurtosis equal to 3.58 generated by the IFBM model (see last row of Table 1) for the same time period.

Also since there are AR processes on c and (k/c) , thereby meaning that one can forecast c and (k/c) using the 1-step forecast method, one can use these values to forecast k . In other words, we prove that one can forecast the signature of the returns distribution by forecasting the values of k and c . Table 2 presents a comparison of forecast and IFBM simulated values and forecast values of k , c , (k/c) for Jan 01, 2014 - Dec 31, 2015. IFBM simulated values can be seen in the last row of Table 1 and forecast values are obtained from equations (8) and (10).

	IFBM Simulated Values	Forecasted Values from eqs.(8) and (10)
(k/c)	0.00478	0.0051
c	0.5	0.4332
k	0.002394	0.002209

Table 2: Comparison: Between simulated values from IFBM(column 2) and forecasted values from eq.(8) and eq.(10) (column 3). (Jan 01, 2014 - Dec 31, 2015).

Based on these forecast values, the returns distribution for 2014-15 generates the theoretical distribution displayed in Fig. 5. Precisely, the grey bars are the historical returns, while the green distribution represents the GBM values; the red distribution represents the simulated distribution from IFBM (using c and k of the last row of Table 1). It is easily observed that, the blue curve, the forecasted distribution using the

forecast values of c and k (second column of Table 2) finely overlaps the simulated distribution.

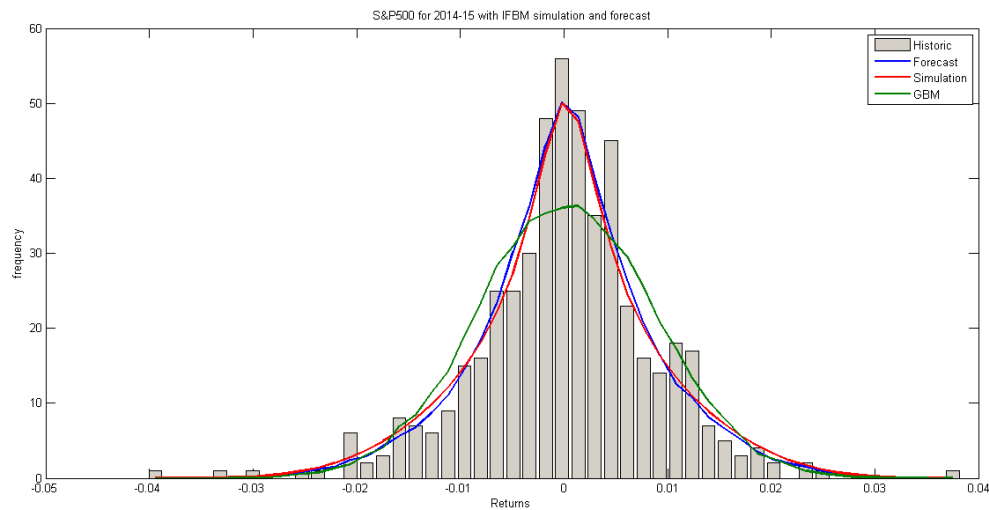


Fig. 5: Distribution of S&P500 returns for 2014-15 with GBM, IFBM simulation and IFBM forecast.

For a normally distributed data set, the 5% probability in left tail will yield a Z-value (Z measures the number of standard deviations away from the mean value) of -1.64, whereas the historical distribution of S&P500 index for 2014-15 data set has 5% probability to left of -1.86; however by applying IFBM on same data accurately forecasts a 5% Z-value of -1.85 in agreement with historical data.

5. Conclusion

In the present paper, we provide a theoretical analysis and a numerical investigation of financial data in order to demonstrate that the response function so introduced in the IFBM model in order to render the GBM model “more flexible” is of great validity and forecasting power. In particular, the best proof stems in Fig. 5 which shows that

our methodology, justified in Section 1 and analytically introduced in Section 3, allows to finely forecast returns distributions.

It can be concurred that this process as modelled in equations (8),(9) and (10) significantly adds to the forecasting of financial time series and provides further and novel directions to academics working in this field. Frequency distribution of returns taken ad hoc from the normal distribution or leptokurtic distribution from previous period will inaccurately measure risk signature for the period under forecast investigation. However, this accurate forecasting of the fat tailed frequency distribution for returns provides a major benefit for practitioners, for example, in Value at Risk (VaR) management.

Risk managers will be able to apply the accurate forecasted returns distribution to accurately calculate the p% VaR loss of the desired untraded asset/index.

References:

- Aas, K. and Haff, I. H. (2006). "The generalized hyperbolic skew student's t-distribution", *Journal of Financial Econometrics*, 4, 275–309.
- Arellano-Valle, R.B., Gómez, H.W. and Quintana, F.A., (2005). "Statistical inference for a general class of asymmetric distributions". *Journal of Statistical Planning and Inference*, 128(2), pp.427-443.
- Ausloos M and Ivanova, K. (2003). "Dynamical model and nonextensive statistical mechanics of a market index on large time windows", *Physical Review E*, 68, 046122.
- Azzalini, A. (1986). "Further results on a class of distributions which includes the normal ones". *Statistica*, 46, 199–208.
- Azzalini, A. and Capitanio, A. (2003). "Distributions generated by perturbation of symmetry with emphasis on a multivariate skew-t distribution". *Journal of the Royal Statistical Society B*, 65, 367–389.
- Barndorff-Nielsen, O.E., Kent, J., and Sørensen, M. (1982). "Normal variance-mean mixtures and z distributions". *International Statistical Review*, 50, 145–159.
- Barndorff-Nielsen, O. E. (1997). "Normal inverse Gaussian distributions and stochastic volatility modelling". *Scandinavian Journal of Statistics* 24, 1-13
- Barndorff-Nielsen, O. E. (1998a). "Probability and statistics: self-decomposability, finance and turbulence". In L. Accardi and C. C. Heyde (Eds.), *Probability Towards 2000*, New York. Springer. Proceedings of a Symposium held 2-5 October 1995 at Columbia University.
- Barndorff-Nielsen, O. E. (1997). "Processes of normal inverse Gaussian type". *Finance & Stochastics* 2, 41-68.
- Barndorff-Nielsen O. E. and Prause K. (1999). "Apparent Scaling". *Finance and Stochastics* 2

Bera, A. K. and Premaratne, G. (2001). "Modeling Asymmetry and Excess Kurtosis in Stock Return Data", Working Paper, Department of Economics, University of Illinois.

Birge, J. R. and Linetsky V. (2007). "*Handbooks in Operational Research and Management Science : Financial engineering*" (Vol. 15). Elsevier, 1-1014

Borges, M.R. (2010) "Efficient market hypothesis in European stock markets", *European Journal of Finance*, 16, 711-726.

Castellano, R., Cerqueti, R. and Rotundo, G. (2018). "Exploring the financial risk of a temperature index: a fractional integrated approach", *Annals of Operations Research*, doi:10.1007/s10479-018-3063-0

Corcuera, J.M., Nualart, D. and Schoutens, W., (2005). "Completion of a Lévy market by power-jump assets". *Finance and Stochastics*, 9(1), pp.109-127.

Critchley, F. and Jones, M. C. (2008). "Asymmetry and gradient asymmetry functions: Density-based skewness and kurtosis". *Scandinavian Journal of Statistics*, 35, 415–437.

Das, S and Sundaram, R. (1999). "Of Smiles and Smirks: A Term Structure Perspective", *Journal of Financial and Quantitative Analysis*, 34, 211-239.

Dhesi, G., Shakeel, M. and Xiao, L. (2016). "Modified Brownian Motion Approach to Modelling Returns Distribution", *Wilmott Magazine*, 82, 74-77.

Dhesi, G. and Ausloos, M. (2016). "Modelling and Measuring the Irrational behaviour of Agents in Financial Markets: Discovering the Psychological Soliton". *Chaos, Solitons and Fractals*, 88, 119-125.

Dhesi, G., Emambocus, M.A.W. and Shakeel, M.B. (2011). "Semi-Closed Simulated Stock Market: An Investigation of its Components", paper presented at *International Finance and Banking Society (2011)* , arXiv:1112.0342v1

Di Matteo, T., Aste, T. and Dacorogna, M.M. (2003). "Scaling Behaviours in Differently Developed Markets", *Physica A: Statistical Mechanics and its Applications* Physica A, 324, 183-188.

Di Matteo, T., Aste, T. and Dacorogna, M.M. (2005). "Long-term Memories of Developed and Emerging Markets: Using the Scaling Analysis to Characterize their Stage of Development", *Journal of Banking & Finance*, 29, 827-851.

Elliott, R.J. and Siu, T.K. (2010). "On risk minimizing portfolios under a Markovian regime-switching Black-Scholes economy". *Annals of Operations Research*, 176(1), 271-291.

Engle, R. F. (1982). "Autoregressive conditional heteroscedasticity with estimates of the variance of United Kingdom inflation". *Econometrica*, 50, 987-1007.

Fernandez, C., Osiewalski, J, and Steel, M. F. J. (1995). "Modeling and inference with v-spherical distributions". *Journal of the American Statistical Association*, 90, 1331-1340.

Fernandez, C. and Steel, M. F. (1998). "On Bayesian modeling of fat tails and skewness". *Journal of the American Statistical Association*, 93(441), 359-371

Ferreira, J. T. A. S. and Steel, M. F. J. (2006). "A constructive representation of univariate skewed distributions". *Journal of the American Statistical Association*, 101, 823–829.

Fischer, M. and Klein, I. (2004). "Kurtosis modelling by means of the J-transformation". *Allgemeines Statistisches Archiv*, 88, 35–50

Funahashi, H. and Higuchi, T. (2017). "An analytical approximation for single barrier options under stochastic volatility models". *Annals of Operations Research*, .1-29.

Gardiner, C.W. (1985). "*Handbook of stochastic methods*" Vol. 3, 2-20. Berlin: springer.

Gençay, R., Dacorogna, M., Muller, U.A., Pictet, O. and Olsen, R., (2001). “*An introduction to high-frequency finance*”. Elsevier.

Goerg, G. M. (2011). “Lambert W random variables – a new generalized family of skewed distributions with applications to risk estimation”. *The Annals of Applied Statistics*, 5, 2197–2230.

Groeneveld, R. A. and Meeden, G. (1984). “Measuring skewness and kurtosis”. *The Statistician*, 33, 391–399.

Guillaume, T. (2018). “On the multidimensional Black–Scholes partial differential Equation”. *Annals of Operations Research*, 1-23.

Hansen, B.E., (1994). “Autoregressive conditional density estimation”. *International Economic Review*, pp.705-730.

Harrison, J.M., Sellke, T.M. and Taylor, A.J. (1983). “Impulse control of Brownian Motion”. *Mathematics of Operations Research*, 8(3), 454-466.

Harvey, C. R. and Siddique, A. (1999). “Autoregressive Conditional Skewness”, *Journal of Financial and Quantitative Analysis*, 34, 465-487.

Harvey, C. R. and Siddique, A. (2000). “Conditional skewness in asset pricing tests”. *The Journal of Finance*, 55, 1263-1295.

Hirshleifer, D., Subrahmanyam, A., Titman, S. (2006), “Feedback and the success of irrational investors”. *Journal of Financial Economics*, 81, 311-338.

Heston, S.L., (1993). “A closed-form solution for options with stochastic volatility with applications to bond and currency options”. *The review of Financial Studies*, 6(2), 327-343.

Hoaglin, D. C., Mosteller, F., and Tukey, J. W. (1985). "Exploring Data Table, Trends, and Shapes". (Wiley, New York).

Hwang, S. and Satchell, S. E. (1999). "Modelling emerging market risk premia using higher moments". *International Journal of Finance and Economics*, 4, 271-296.

Johnson, N. L. (1949). "Systems of frequency curves generated by methods of translation". *Biometrika*, 36, 149–176.

Jones, M. C. (2014). "Generating distributions by transformation of scale". *Statistica Sinica*, 24(2), 749–771.

Jones, M. C. and Faddy, M. J. (2003). "A skew extension of the t-distribution, with applications". *Journal of Royal Statistical Society, Series B*, 65, 159–174.

Jones, M. C. and Pewsey, A. (2009). "Sinh-arcsinh distributions". *Biometrika*, 96, 761–780.

Kloeden, P.E., Neuenkirch, A. and Pavani, R. (2011). "Multilevel Monte Carlo for stochastic differential equations with additive fractional noise". *Annals of Operations Research*, 189(1), 255-276.

Kürüm, E., Weber, G.W. and Iyigun, C. (2018). "Early warning on stock market bubbles via methods of optimization, clustering and inverse problems". *Annals of Operations Research*, 260(1-2), 293-320.

Leon, A., Rubio, G. and Serna, G. (2004). "Autoregressive Conditional Volatility, Skewness and Kurtosis", WP-AD 2004-13, Instituto Valenciano de Investigaciones Economicas.

Leon, J.A., Vives, J., Utzet, F. and Sole J.L. (2002). "On Levy processes, Malliavin calculus and market models with jumps". *Finance and Stochastics*, 6 (2), 197-225.

Ley, C. (2015), "Flexible modelling in statistics: Past, present and future," *Journal de la Soci ete Fran,caise de Statistique*, 156, 76–96. MR3338241

Ley, C. and Paindaveine, D. (2010). "Multivariate skewing mechanisms: A unified perspective based on the transformation approach". *Statistics and Probability Letters*, 80, 1685–1694.

Lucheroni, C. and Mari, C. (2018). "Risk shaping of optimal electricity portfolios in the stochastic LCOE theory". *Computers & Operations Research*, 96, 374-385.

Mandelbrot, B. B. (1963b). "The Variation of Certain Speculative Prices". *Journal of Business*, 36, 394–419.

Mantegna, R. N. (1991). "Levy walks and enhanced diffusion in Milan Stock-Exchange", *Physica A: Statistical Mechanics and its Applications*, 179, 232-242.

Miao, D.W.C., Lin, X.C.S. and Chao, W.L. (2016). "Computational analysis of a Markovian queueing system with geometric mean-reverting arrival process". *Computers & Operations Research*, 65, 111-124.

Mills, T.C. (1995). "Modelling skewness and kurtosis in the London Stock Exchange FT-SE index return distributions". *The Statistician*, 44(3), 323-332.

Mills T. C. and Markellos, R. N. (2008). "The Econometric Modelling of Financial Time Series" (Cambridge University Press, Cambridge, UK).

Merton, R. C., (1975). "An Asymptotic Theory of Growth Under Uncertainty". *The Review of Economic Studies*, 42(3), 375-393.

Ormecci, M., Dai, J.G. and Vate, J.V. (2008). "Impulse control of Brownian motion: the constrained average cost case". *Operations Research*, 56(3), 618-629.

Peiró, A. (1999). "Skewness in financial returns", *Journal of Banking and Finance*, 23, 847-862.

Puu, T., (1992). "Order and disorder in business cycles". *Annals of Operations Research*, 37(1), pp.169-183.

Quintana, F. A., Steel, M. F. J., and Ferreira, J. T. A. S. (2009). "Flexible univariate continuous distributions". *Bayesian Analysis*, 4, 497–522.

Rachev, S.T., Menn, C. and Fabozzi, F.J. (2005). "*Fat-tailed and skewed asset return distributions: implications for risk management, portfolio selection, and option pricing*" (Vol. 139). John Wiley & Sons.

Rubio, F. J. and Steel, M. F. (2015). "Bayesian modelling of skewness and kurtosis with two-piece scale and shape transformations". *Electronic Journal of Statistics*, 9(2), 1884-1912.

Rosco, J.F., Jones, M.C. and Pewsey, A., (2011). "Skew t distributions via the sinh-arcsinh transformation". *Test*, 20(3), pp.630-652.

Schinckus, C., Jovanovic, F. and Ausloos, M. (2016). "On the "usual" misunderstandings between econophysics and finance: Some clarifications on modelling approaches and efficient market hypothesis", *International Review of Financial Analysis*, 47, 7-14 .

Siu, T.K. (2012). "A BSDE approach to risk-based asset allocation of pension funds with regime switching". *Annals of Operations Research*, 201(1), 449-473.

Tapiero, C.S. and Vallois, P. (2018). "Randomness and fractional stable distributions". *Physica A: Statistical Mechanics and its Applications*, 511, 54-60.

Zacharias, C. and Armony, M. (2016). "Joint panel sizing and appointment scheduling in outpatient care". *Management Science*, 63(11), 3978-3997.

Zheng, M., Wu, K. and Shu, Y. (2016). "Newsvendor problems with demand forecast updating and supply constraints". *Computers & Operations Research*, 67, 193-206.