

Dos and don'ts for managing LMS change project within hybrid working environment

Syed Adnan Adil

*Team Manager Systems, Subscriptions and Licensing,
London South Bank University.*

PhD Scholar, UCL Department of Information Studies

CPD25 event: Changing library systems. 23rd March, 2022



Objectives

- Contextual background
- How much engagement ?
- Project plan
- Some dos and don'ts
- Conclusion





London South Bank Group

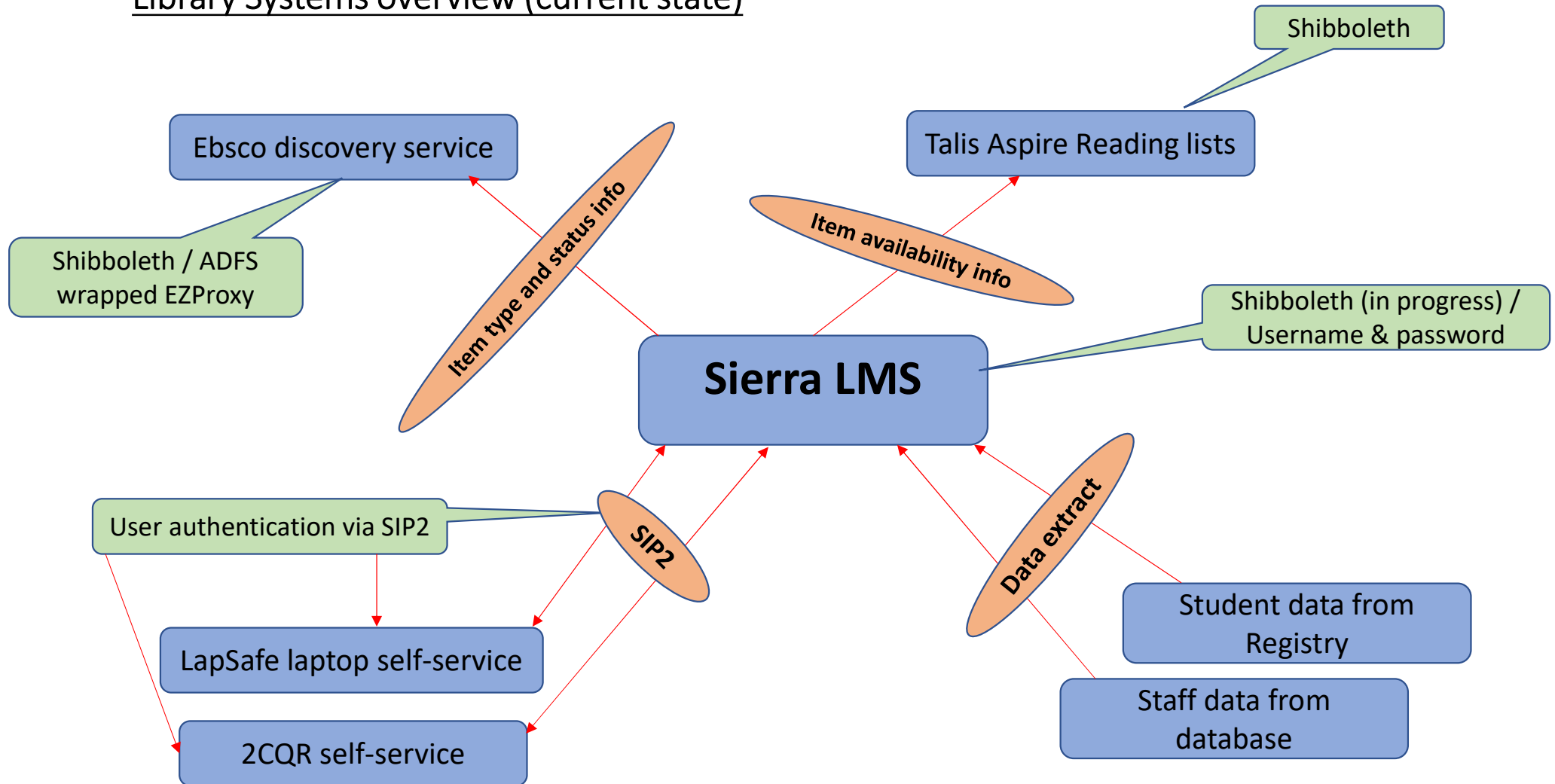
- London South Bank University (3 sites)
- Lambeth College
- South Bank University Academy (for 11-19 Year olds)
- South Bank UTC (for 14-19 year olds)

Existing library technology portfolio

- Innovative Sierra ILS
- Talis Aspire Reading Lists
- Ebsco discovery services
- Bibliotheca & D-tech self-service
- External metadata provider
- Moodle as institutional VLE
- Shibboleth & Hosted EZProxy



Library Systems overview (current state)





su(Library Automation) AND su(library management system) OR su(integrated library system) OR su(library software) OR su(library services platform)



Research highlights

Source type

-  Scholarly Journals (189)
-  Magazines (39)
-  Trade Journals (148)
-  Blogs, Podcasts, & Websites (26)

[More >](#)

Publication date

1990 - 2022 (decades)



402 results

Applied filters

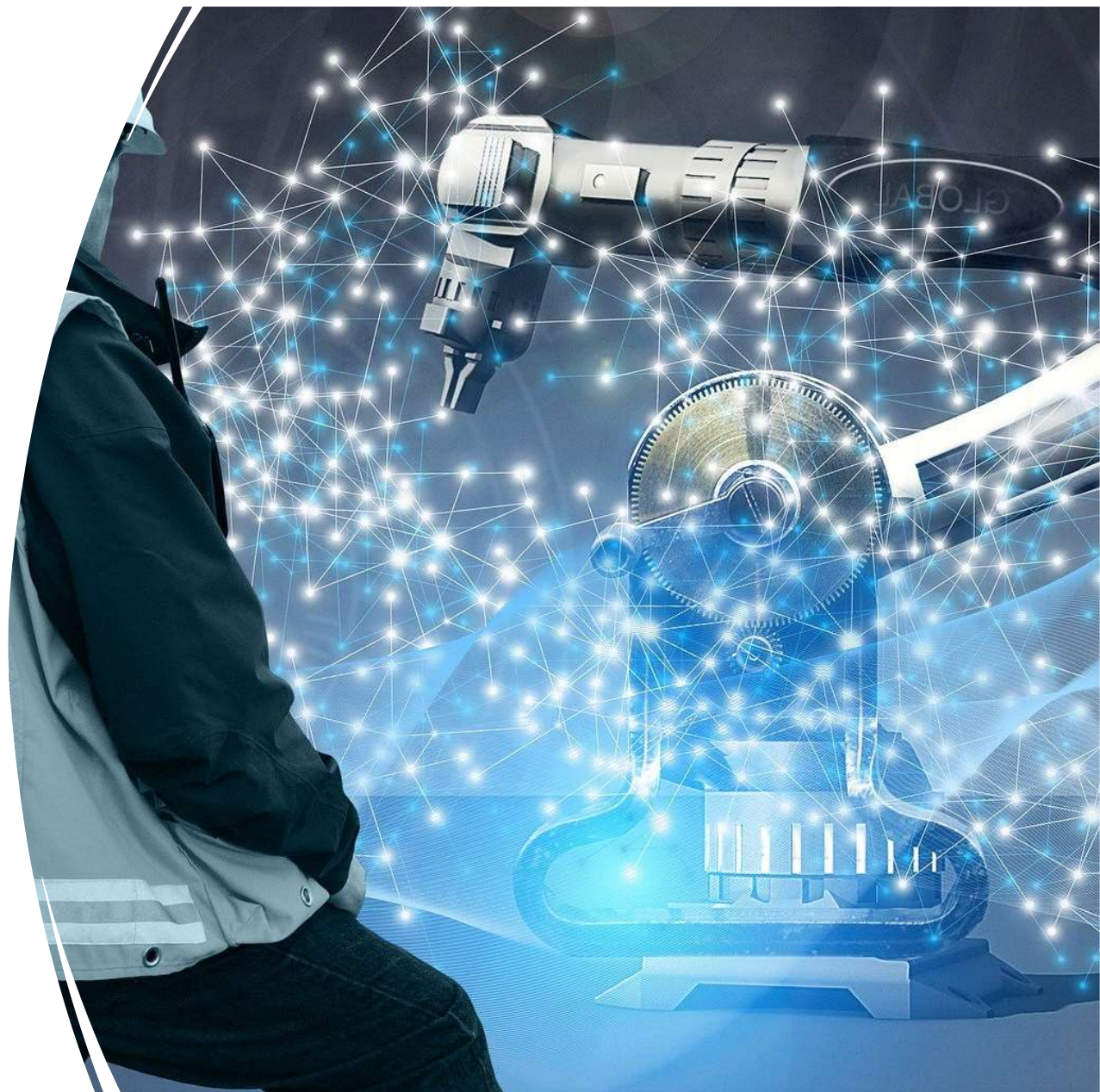
[Clear all filters](#)

1990-2022 (decades)

United Kingdom--UK

APUC Framework suppliers

- OCLC WMS
- PTFS Europe
- ExLibris UK
- EBSCO International Inc





Why the LMS change ?

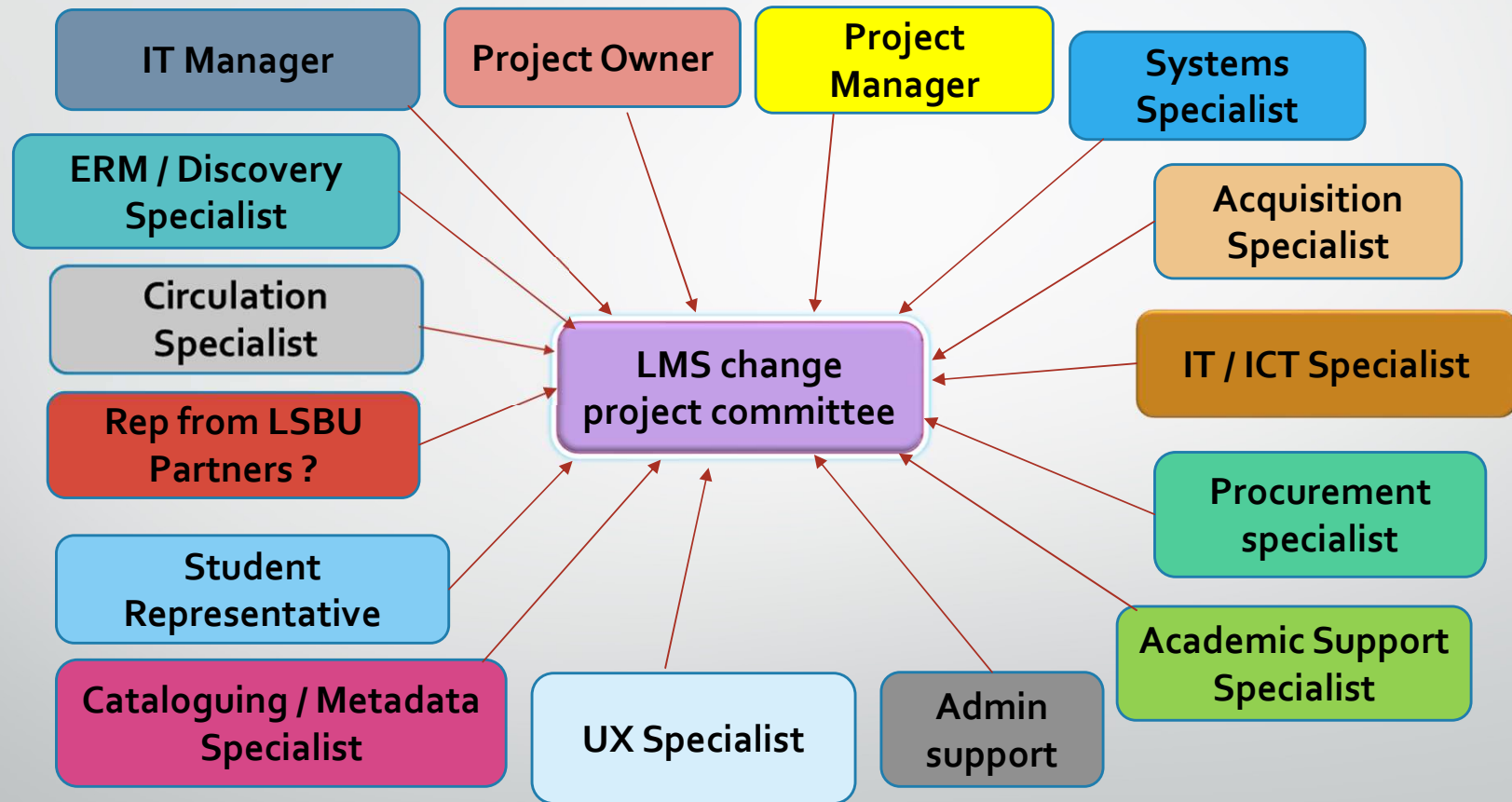
- Consistent infrastructure across the group
- Streamlined workflows
- Less integrations
- Future-facing and leading-edge technology

How much engagement ?

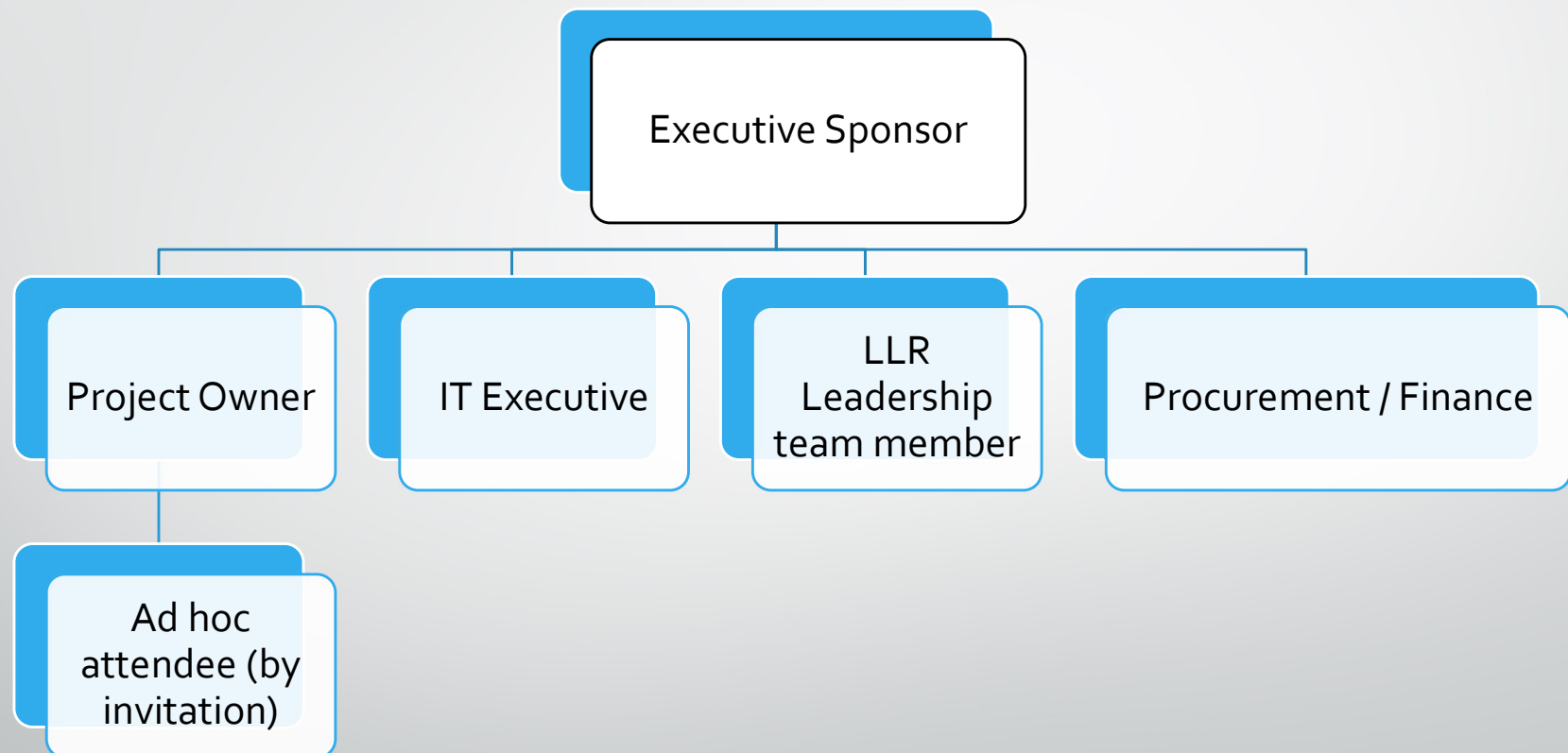
-
- Tokenism vs classic approach
 - LMS change committee
 - Role profiles
 - Stakeholders mapping
 - Onsite demos
 - Visits of reference sites



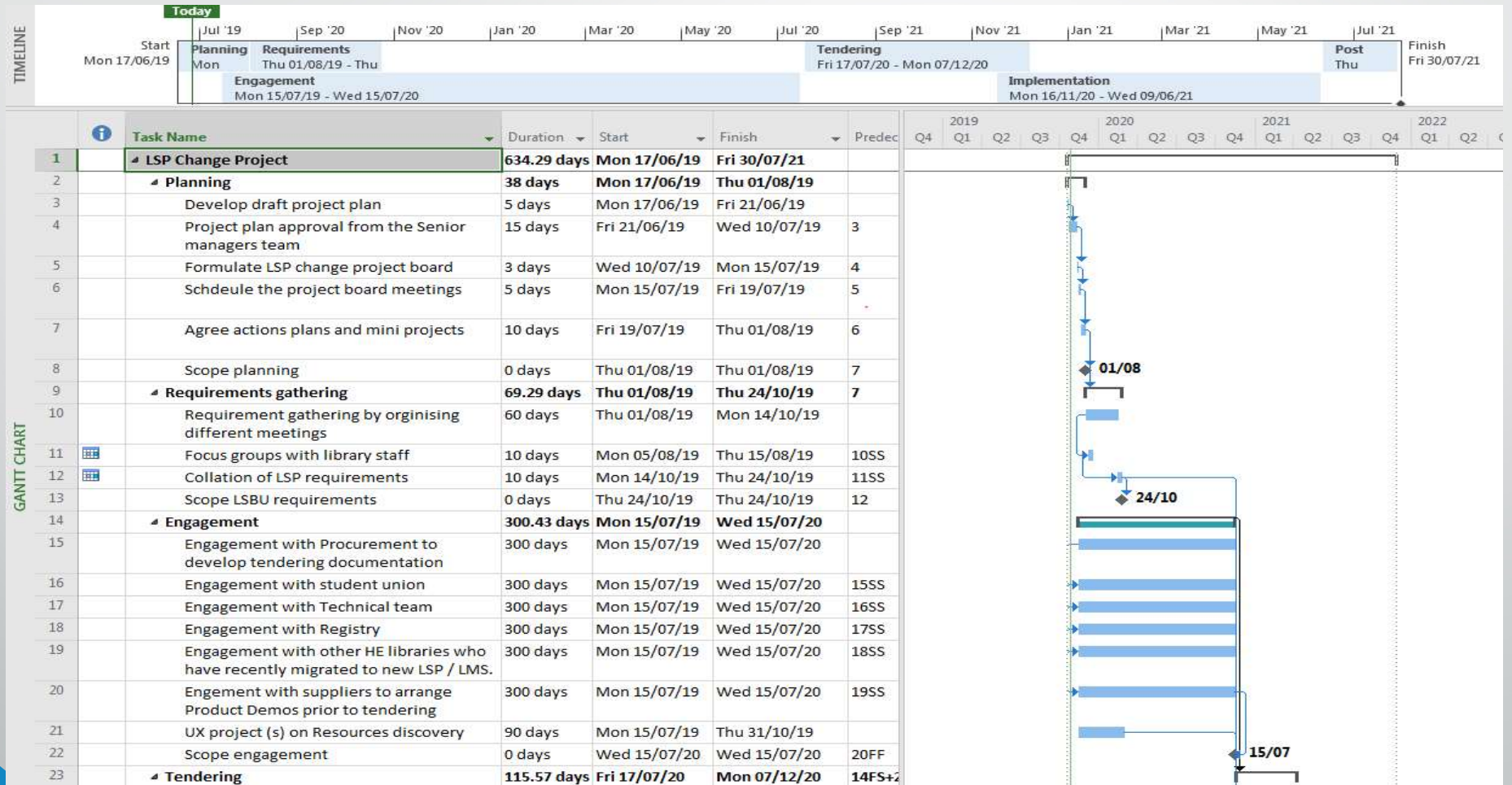
Proposed structure of the LMS Project Committee



Proposed structure of the LMS Project Board



Review of the Project Plan



Cyber attack

- Recovery plan
- More scrutiny
- Review of contracts
- Cloud first policy





Impact of Covid19

- Online engagement
- Agenda setting
- More time for analysis

Project approach

Procurement via APUC framework

LMS, Discovery, Reading list

800 plus functional statements

New library move

Change preparedness

Challenges and risks



Requirement gathering

Collation of module based functional statements for LMS, keeping in view next 5 years

Requirements

Electronic resource management

ILL

Circulation

System admin and integrations

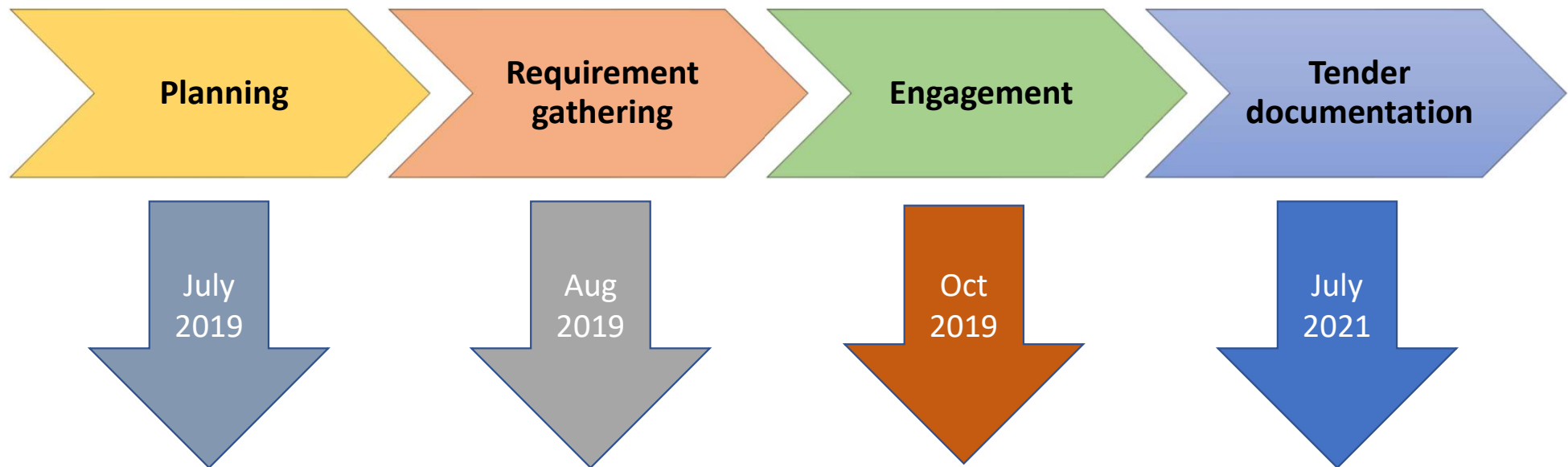
Discovery and UX

Acquisitions

Metadata management

General requirements

Where we are in the project ?



Improvement journey

- LMS migration of Lambeth College into Sierra
- Discovery optimisation
- System status dashboard
- Staffing review
- SSO project
- Self-service refresh



Outcomes so far

-
- Objective analysis
 - Change ownership
 - Horizon broadening
 - SWOT analysis
 - Terminological awareness
 - Workflow standardisation



Top tips

- Engage early
- Learn from everyone
- Suppliers as partners
- Knowledge management
- Basics of the game
- Review of UK HE libraries
- Why the project at all ?
- User involvement





Top tips

- Business case making
- Understanding the bigger picture
- Flexibility
- Project sustainability
- Review of roadmaps
- Professional literature
- Tech trends
- Objective alignment

Traps

- Who needs to know ?
- Let the experts voice their concerns.
- Informal data gathering
- Expectation management
- Emotional involvement





Thank you

References

- All the images used were collected from collection of copyright free gallery of PixaBay and were used for educational purpose.
- Search was conducted on Library & Information Science Collection (dated 18 March, 2022).